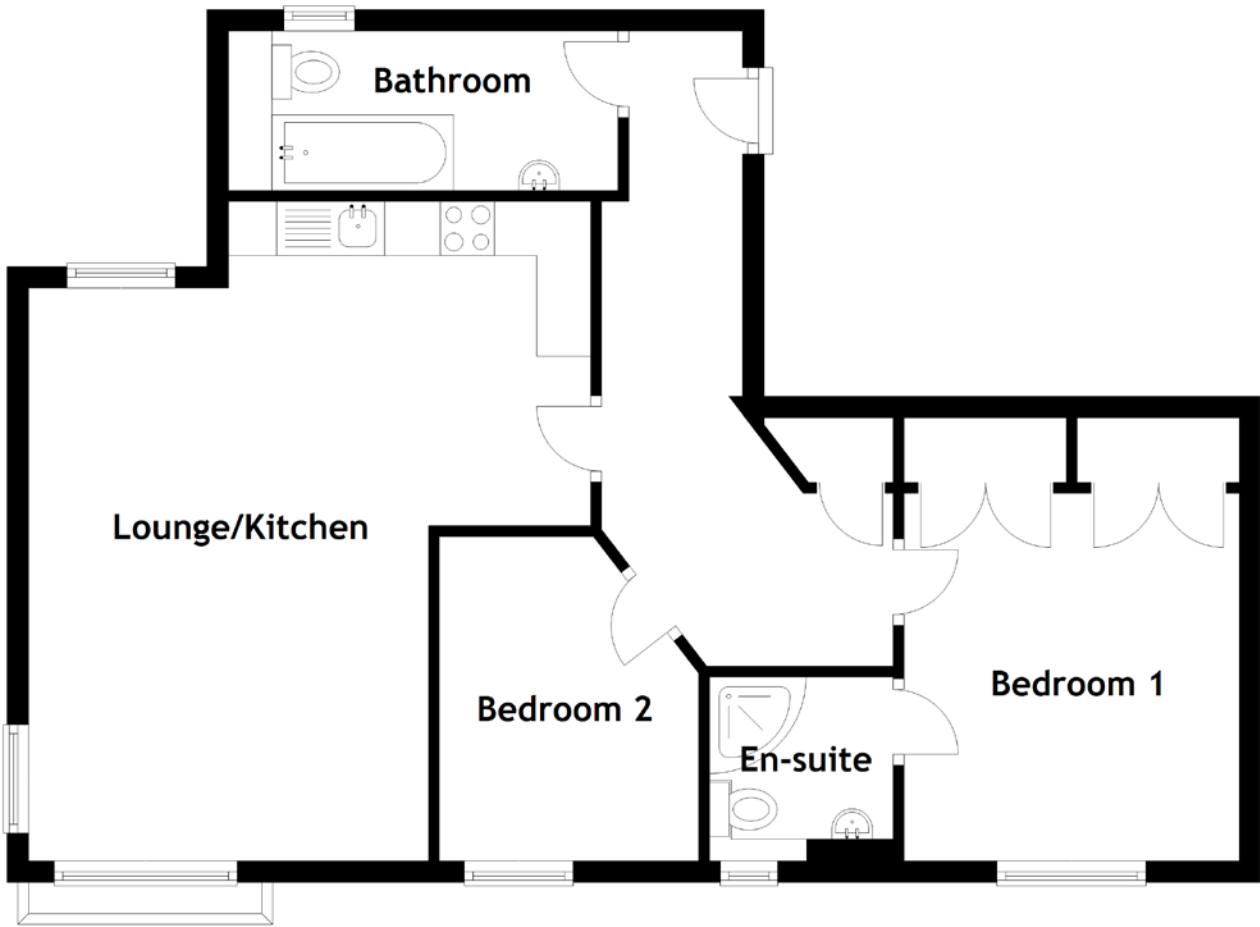


# FLOOR PLAN, DIMENSIONS & MAP



Approximate Dimensions (Taken from the widest point)

Lounge/Kitchen 6.10m (20') x 5.20m (17'1")  
 Bedroom 1 3.40m (11'2") x 3.10m (10'2")  
 En-suite 1.70m (5'7") x 1.70m (5'7")

Bedroom 2 3.00m (9'10") x 2.40m (7'10")  
 Bathroom 3.60m (11'10") x 1.48m (4'10")

Gross internal floor area (m<sup>2</sup>): 66m<sup>2</sup>  
 EPC Rating: B

