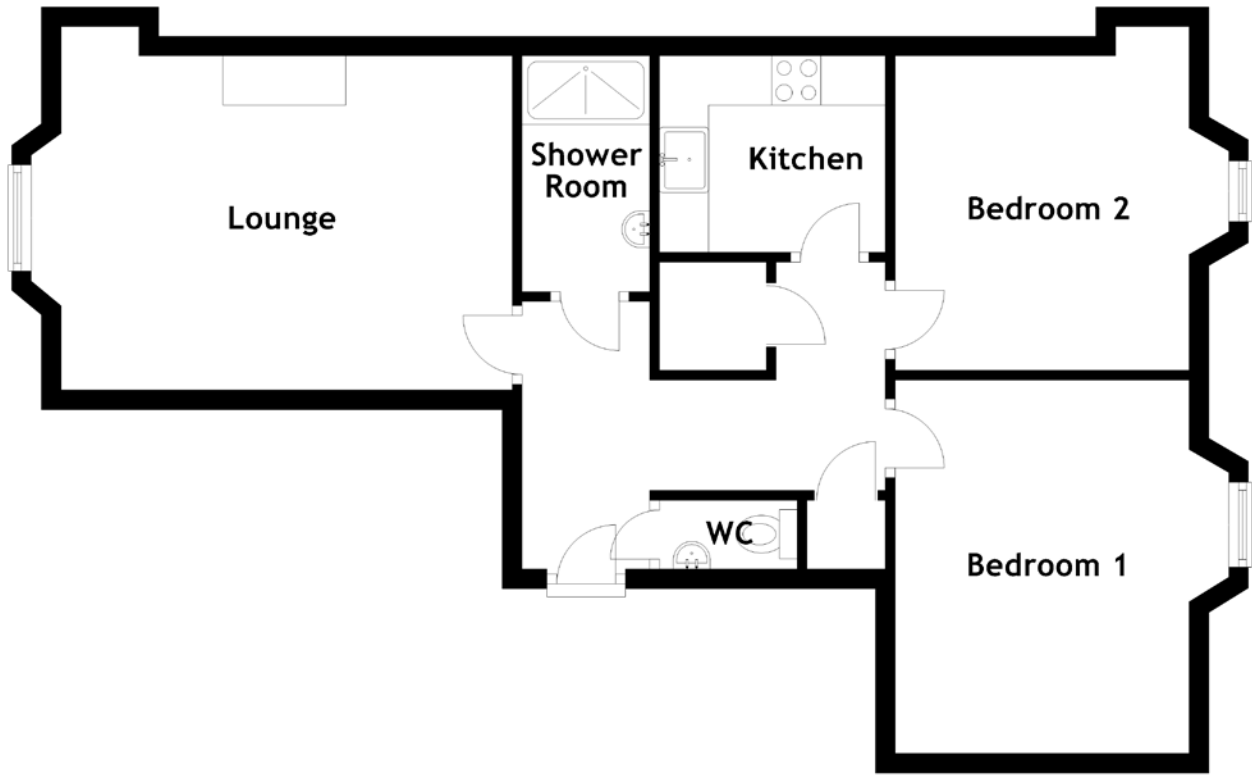


FLOOR PLAN, DIMENSIONS & MAP



Approximate Dimensions
(Taken from the widest point)

Lounge 4.90m (16'1") x 2.50m (8'2")
 Kitchen 2.30m (7'7") x 2.00m (6'7")
 Bedroom 1 3.80m (12'6") x 3.46m (11'4")

Bedroom 2 3.40m (11'2") x 3.20m (10'6")
 Shower Room 2.40m (7'10") x 1.30m (4'3")
 WC 1.40m (4'7") x 0.70m (2'4")

Gross internal floor area (m²): 61m²
 EPC Rating: C

