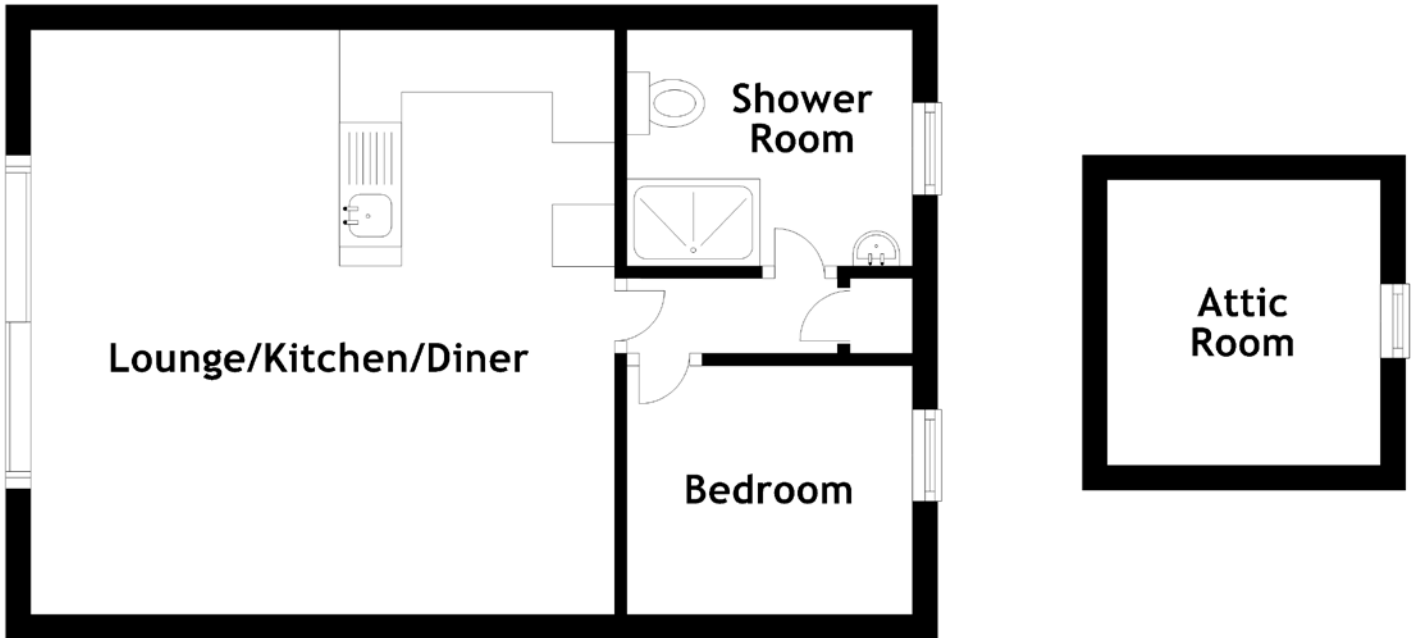


# FLOOR PLAN, DIMENSIONS & MAP



Approximate Dimensions (Taken from the widest point)

Lounge/Kitchen	4.70m (15'5") x 4.00m (13'1")
Shower Room	2.30m (7'7") x 1.90m (6'3")
Bedroom	2.30m (7'7") x 2.00m (6'7")
Attic Room	2.30m (7'6") x 2.20m (7'3")

