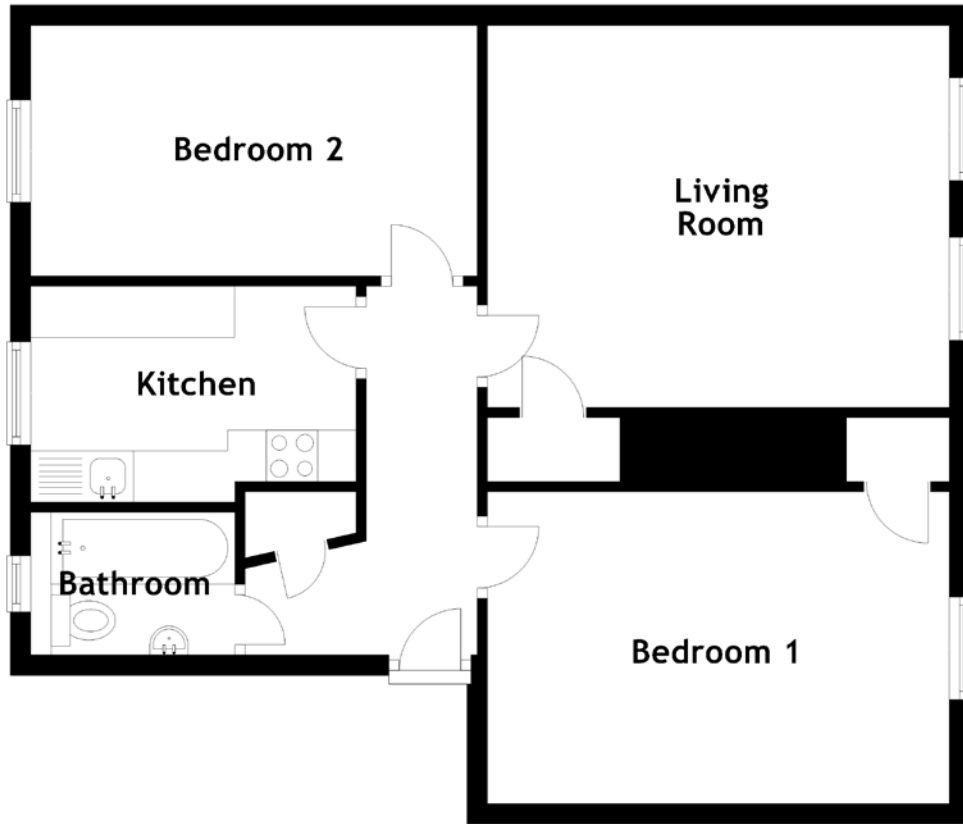


FLOOR PLAN, DIMENSIONS & MAP



Approximate Dimensions (Taken from the widest point)

Living Room 4.50m (14'9") x 3.72m (12'2")
 Kitchen 3.17m (10'5") x 2.10m (6'11")
 Bathroom 1.99m (6'6") x 1.39m (4'7")

Bedroom 1 4.50m (14'9") x 3.04m (10')
 Bedroom 2 4.35m (14'3") x 2.44m (8')

Gross internal floor area (m²): 62m²
 EPC Rating: C

