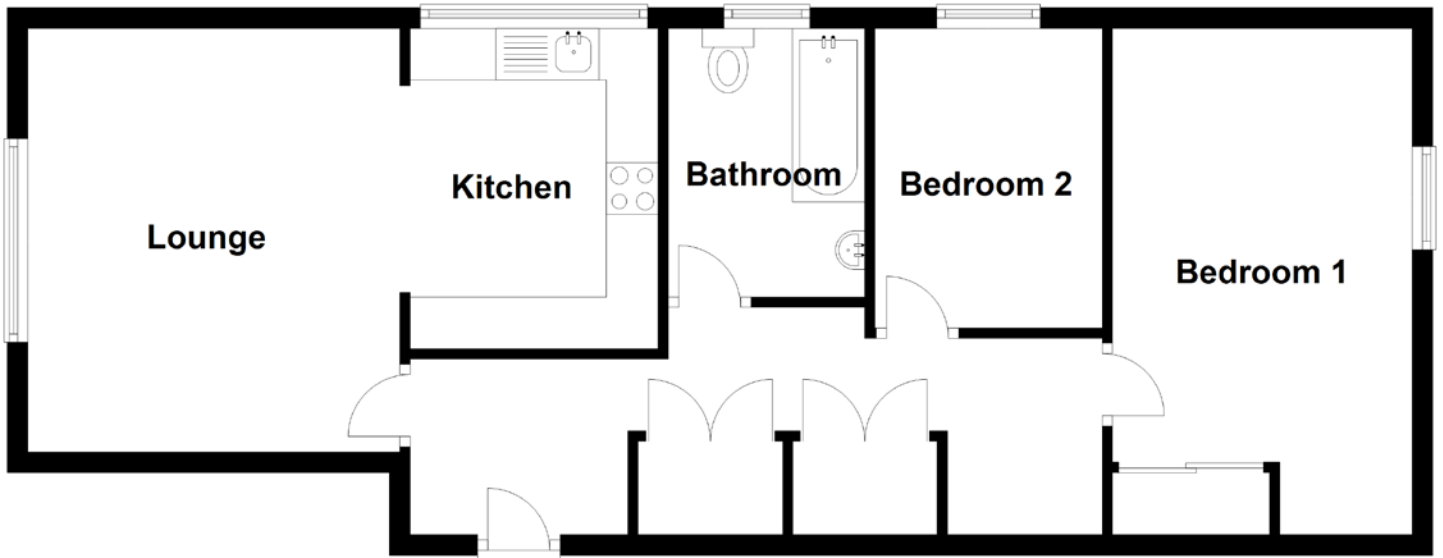


FLOOR PLAN, DIMENSIONS & MAP



Approximate Dimensions (Taken from the widest point)

Lounge 4.10m (13'5") x 3.60m (11'10")
 Kitchen 3.10m (10'2") x 2.40m (7'10")
 Bathroom 2.60m (8'6") x 1.90m (6'3")

Bedroom 1 4.90m (16'1") x 2.90m (9'6")
 Bedroom 2 2.90m (9'6") x 2.20m (7'3")

Gross internal floor area (m²): 70m²
 EPC Rating: C

