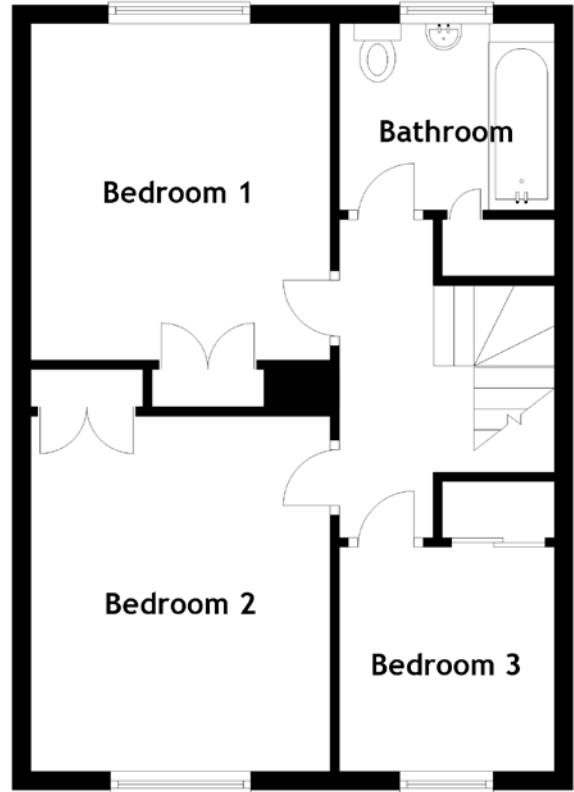
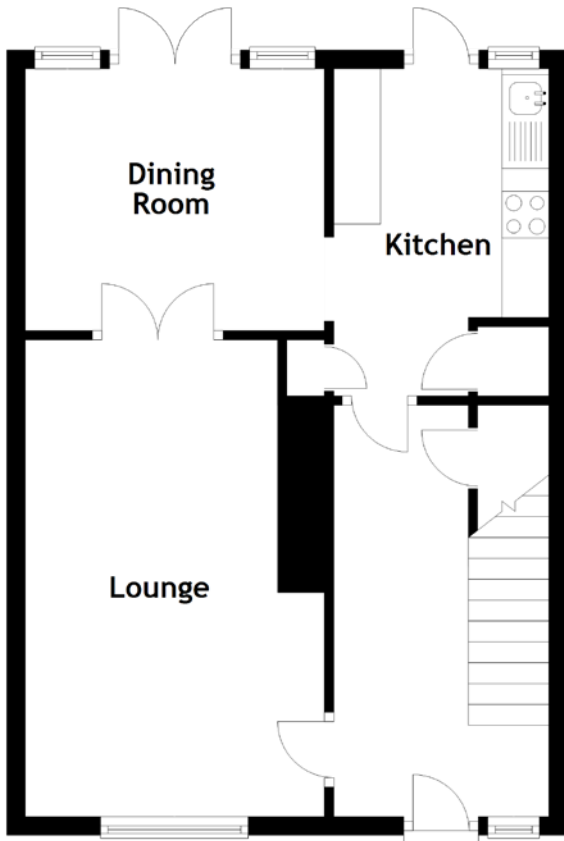


FLOOR PLAN, DIMENSIONS & MAP



Approximate Dimensions
(Taken from the widest point)

Lounge	5.10m (16'9") x 3.20m (10'6")
Dining Room	3.20m (10'6") x 2.80m (9'2")
Kitchen	3.40m (11'2") x 2.30m (7'7")

Bedroom 1	3.60m (11'10") x 3.30m (10'10")
Bedroom 2	3.80m (12'6") x 3.30m (10'10")
Bedroom 3	2.40m (7'10") x 2.30m (7'7")
Bathroom	2.30m (7'7") x 2.00m (6'7")

Gross internal floor area (m²): 88m² | EPC Rating: D

