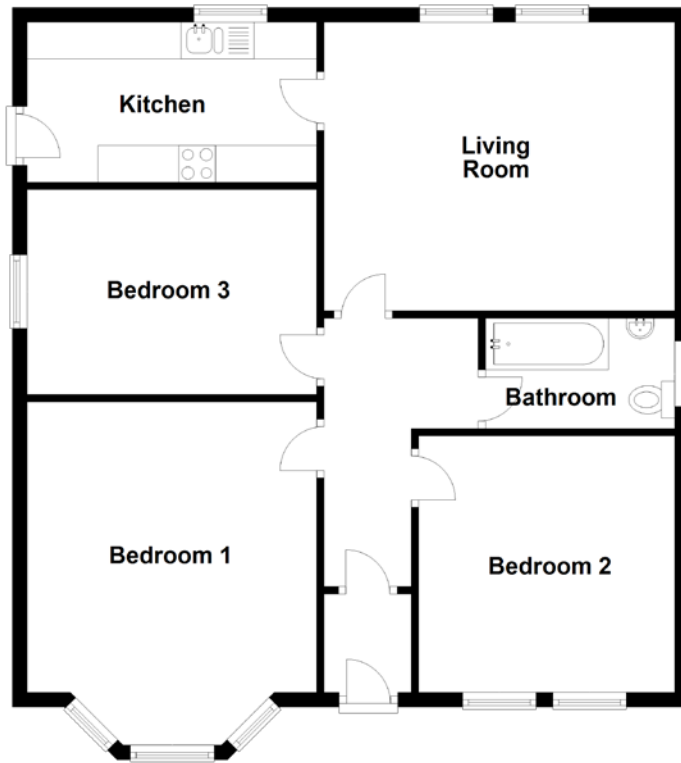


FLOOR PLAN, DIMENSIONS & MAP



Approximate Dimensions
(Taken from the widest point)

Living Room 4.81m (15'9") x 3.93m (12'11")
Kitchen 3.95m (13') x 2.18m (7'2")
Bedroom 1 4.67m (15'4") x 3.95m (13')

Bedroom 2 3.49m (11'5") x 3.49m (11'5")
Bedroom 3 3.95m (13') x 2.79m (9'2")
Bathroom 2.58m (8'6") x 1.52m (5')

Gross internal floor area (m²): 84m²
EPC Rating: E

