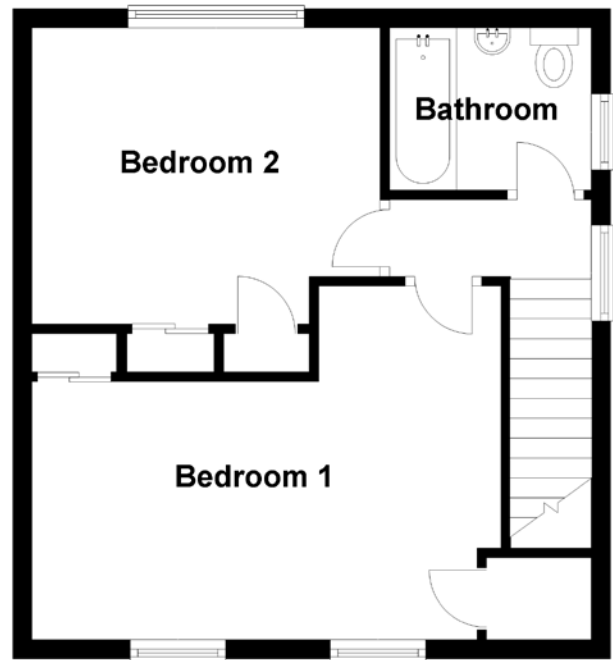
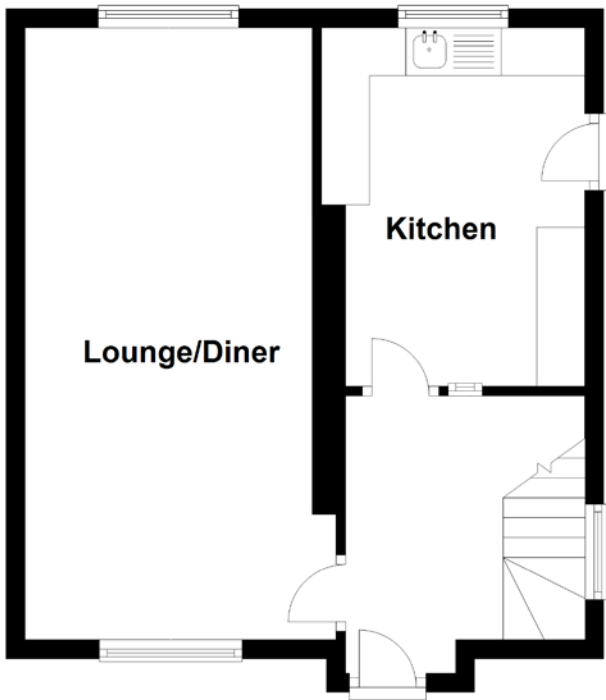


# FLOOR PLAN, DIMENSIONS & MAP



Approximate Dimensions  
(Taken from the widest point)

Kitchen	3.75m (12'4") x 2.70m (8'10")
Lounge/Diner	6.40m (21') x 3.30m (10'10")
Bedroom 1	4.90m (16'1") x 3.70m (12'2")
Bedroom 2	3.75m (12'4") x 3.10m (10'2")

Bathroom 2.11m (6'11") x 1.70m (5'7")

Gross internal floor area (m<sup>2</sup>): 74m<sup>2</sup>  
EPC Rating: D

Extras (Included in the sale): Carpets and floor coverings, light fixtures and fittings.

