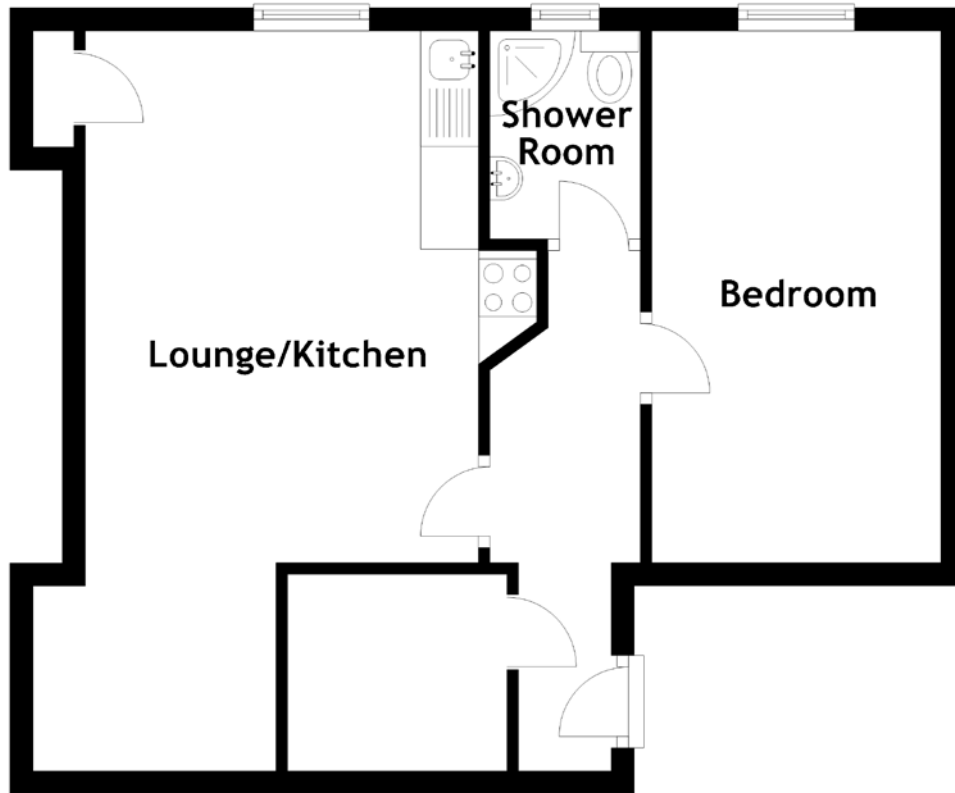


# FLOOR PLAN, DIMENSIONS & MAP



Approximate Dimensions (Taken from the widest point)

Lounge/Kitchen  
Bedroom  
Shower Room

4.60m (15'1") x 1.75m (5'9")  
4.60m (15'1") x 2.50m (8'2")  
1.80m (5'11") x 1.30m (4'3")

Gross internal floor area (m<sup>2</sup>): 42m<sup>2</sup>  
EPC Rating: D

