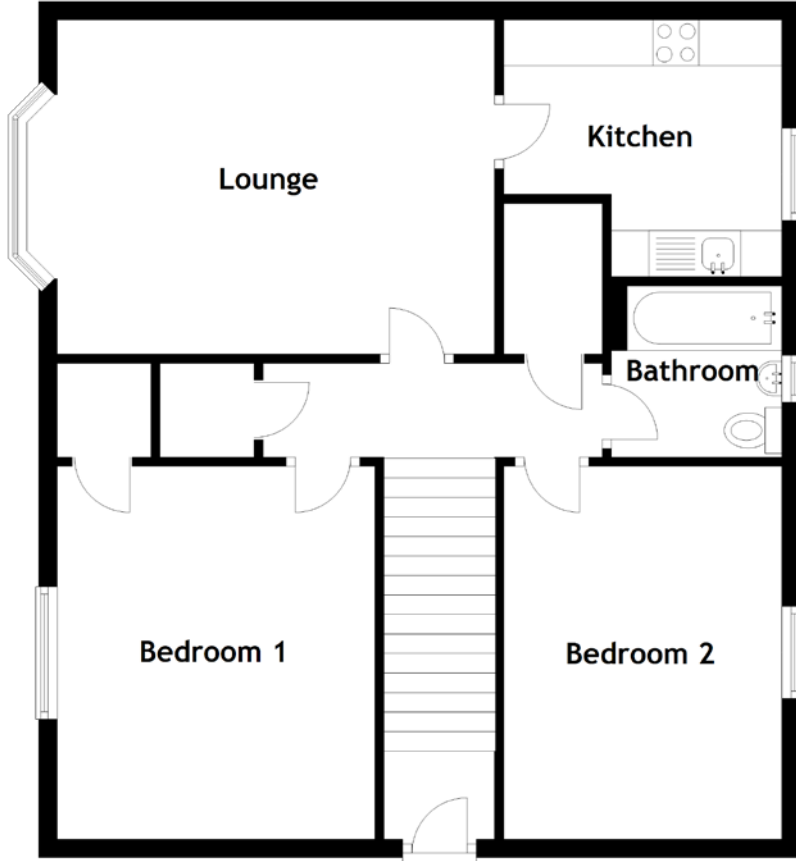


# 78 Killoch Drive

GLASGOW, G13 3AT



Approximate Dimensions (Taken from the widest point)

|           |                                |
|-----------|--------------------------------|
| Lounge    | 4.75m (15'7") x 3.63m (11'11") |
| Kitchen   | 3.02m (9'11") x 2.79m (9'2")   |
| Bathroom  | 1.86m (6'1") x 1.85m (6'1")    |
| Bedroom 1 | 4.05m (13'3") x 3.45m (11'4")  |
| Bedroom 2 | 4.05m (13'3") x 3.03m (9'11")  |

Gross internal floor area (m<sup>2</sup>): 72m<sup>2</sup> | EPC Rating: C