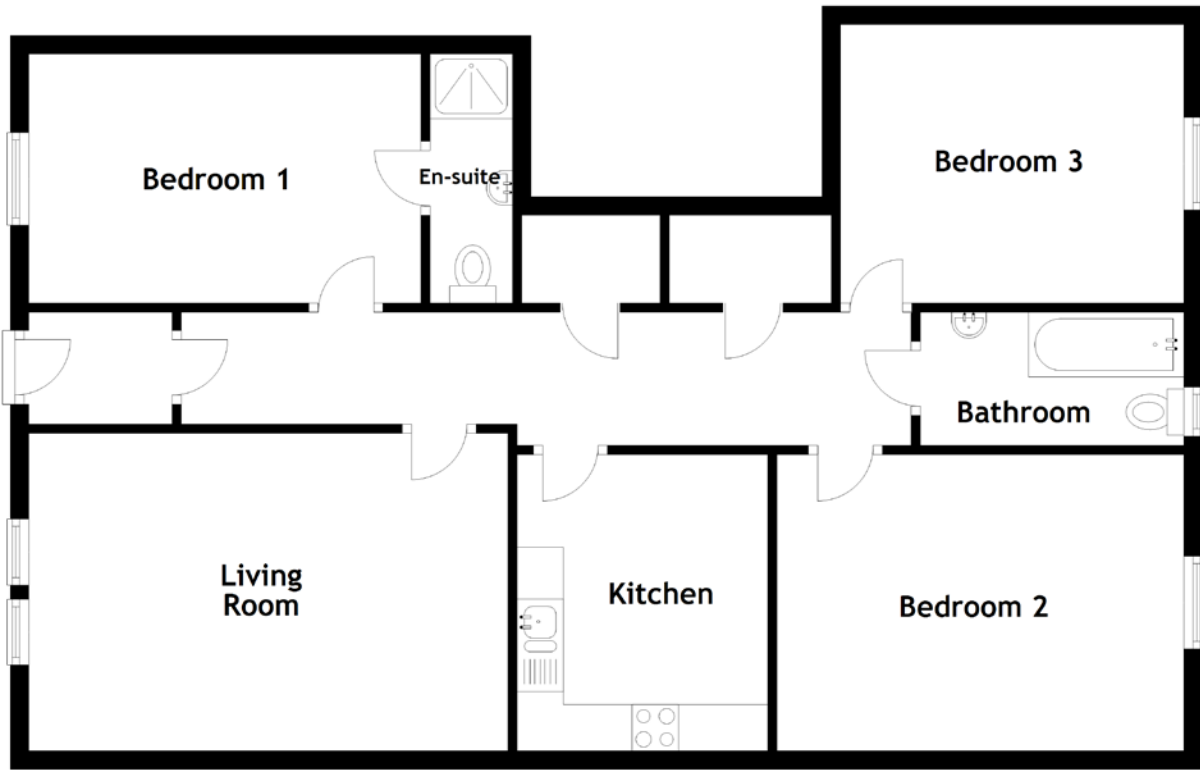


FLOOR PLAN, DIMENSIONS & MAP



Approximate Dimensions
(Taken from the widest point)

Living Room 5.18m (17') x 3.43m (11'3")
 Kitchen 3.20m (10'6") x 2.71m (8'11")
 Bathroom 2.85m (9'4") x 1.31m (4'4")
 Bedroom 1 4.24m (13'11") x 2.69m (8'10")

En-suite 2.69m (8'10") x 0.89m (2'11")
 Bedroom 2 4.40m (14'5") x 3.20m (10'6")
 Bedroom 3 3.71m (12'2") x 3.01m (9'10")

Gross internal floor area (m²): 89m²

EPC Rating: C

