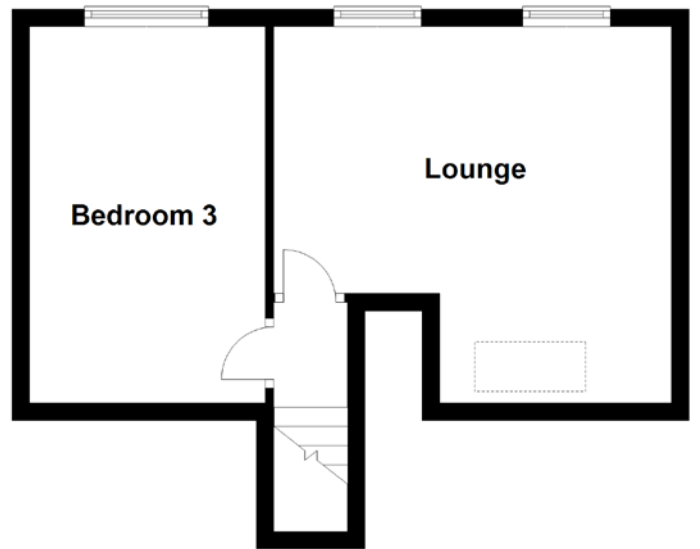
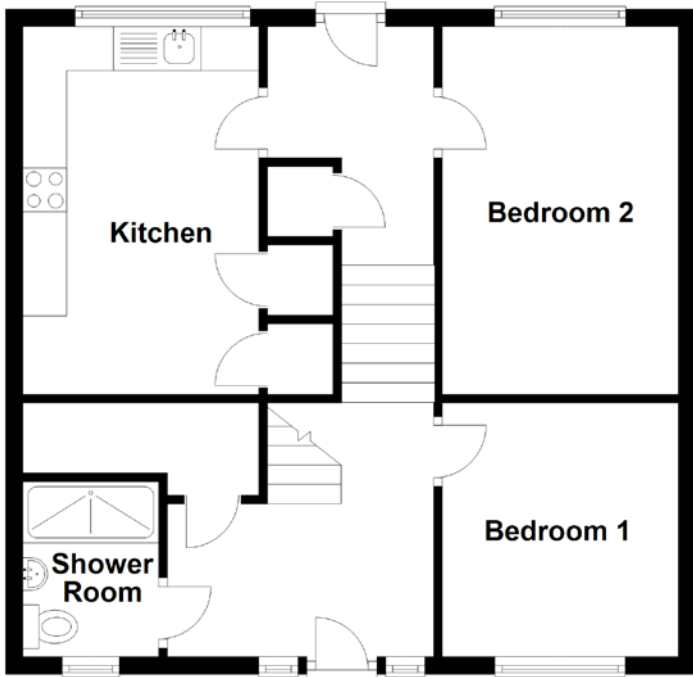


# FLOOR PLAN, DIMENSIONS & MAP



Approximate Dimensions  
(Taken from the widest point)

Shower Room	2.00m (6'7") x 1.55m (5'1")
Bedroom 1	2.90m (9'6") x 2.70m (8'10")
Kitchen	4.20m (13'9") x 2.70m (8'10")
Bedroom 2	4.20m (13'9") x 2.70m (8'10")

Lounge	4.55m (14'11") x 4.30m (14'1")
Bedroom 3	4.30m (14'1") x 2.70m (8'10")

Gross internal floor area (m<sup>2</sup>): 85m<sup>2</sup> | EPC Rating: D

Extras: Carpets and floor coverings, light fixtures and fittings, curtains and blinds.

