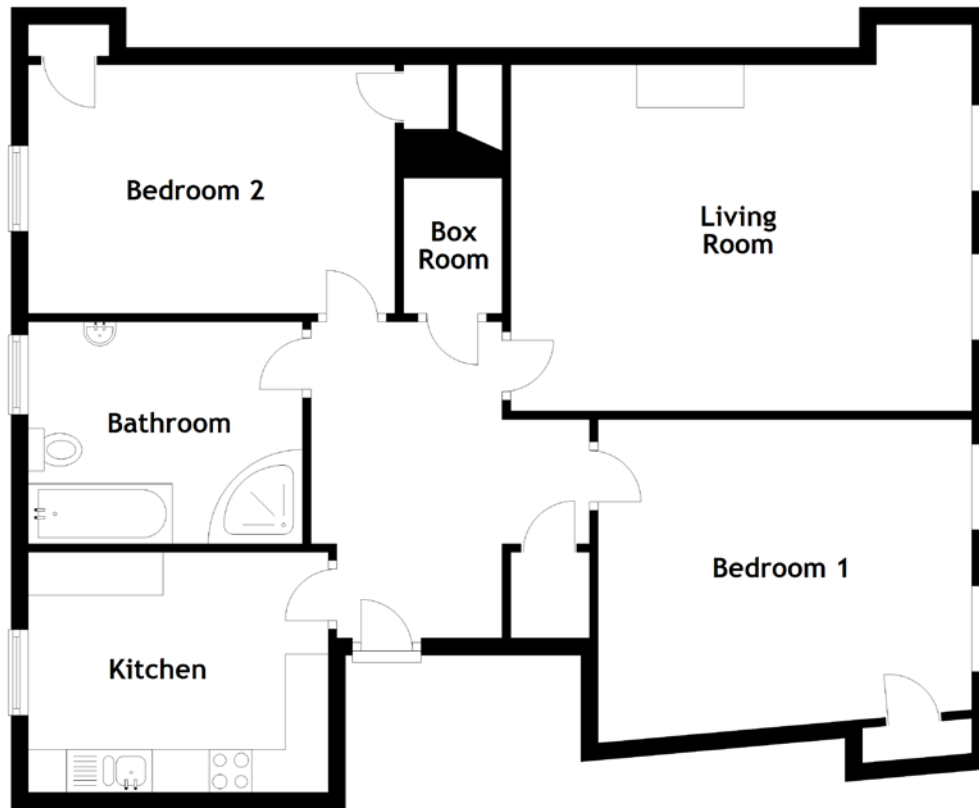


FLOOR PLAN, DIMENSIONS & MAP



Approximate Dimensions
(Taken from the widest point)

Living Room	5.38m (17'8") x 4.04m (13'3")
Kitchen	3.50m (11'6") x 2.80m (9'2")
Bedroom 1	4.36m (14'4") x 3.78m (12'5")

Bedroom 2	4.28m (14'1") x 2.90m (9'6")
Bathroom	3.20m (10'6") x 2.59m (8'6")
Box Room	1.77m (5'10") x 1.15m (3'9")

Gross internal floor area (m²): 90m²
EPC Rating: D

