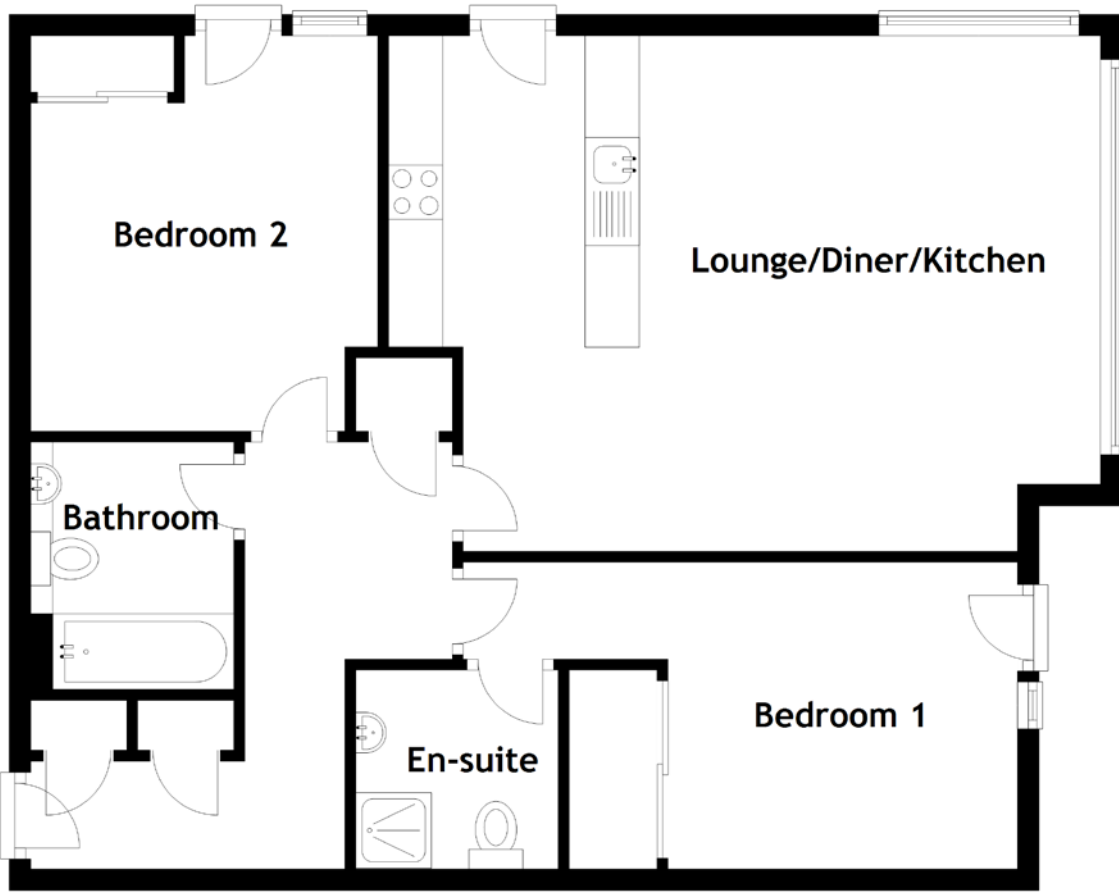


FLOOR PLAN, DIMENSIONS & MAP



Approximate Dimensions
(Taken from the widest point)

Lounge/Kitchen 6.59m (21'7") x 4.77m (15'8")
Bathroom 2.29m (7'6") x 1.88m (6'2")

Bedroom 1 5.13m (16'10") x 2.84m (9'4")
En-suite 1.87m (6'2") x 1.84m (6'1")
Bedroom 2 3.66m (12') x 3.21m (10'6")

Gross internal floor area (m²): 75m² | EPC Rating: B

