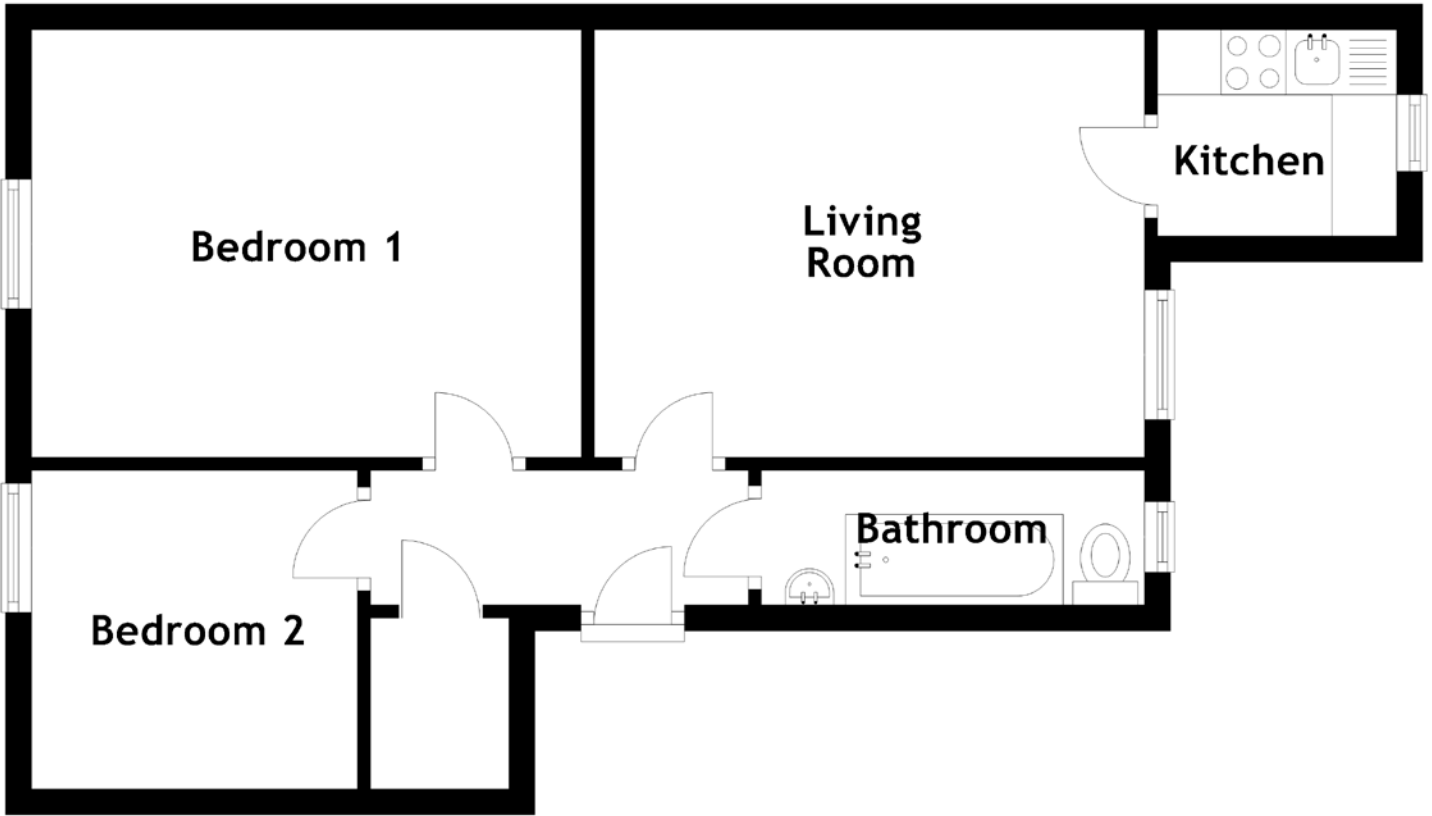


FLOOR PLAN, DIMENSIONS & MAP



Approximate Dimensions (Taken from the widest point)

Living Room 4.25m (13'11") x 3.30m (10'10")
 Kitchen 1.85m (6'1") x 1.59m (5'3")
 Bedroom 2 2.52m (8'3") x 2.46m (8'1")

Bedroom 1 4.25m (13'11") x 3.30m (10'10")
 Bathroom 2.96m (9'9") x 1.04m (3'5")

Gross internal floor area (m²): 42m²
 EPC Rating: D

