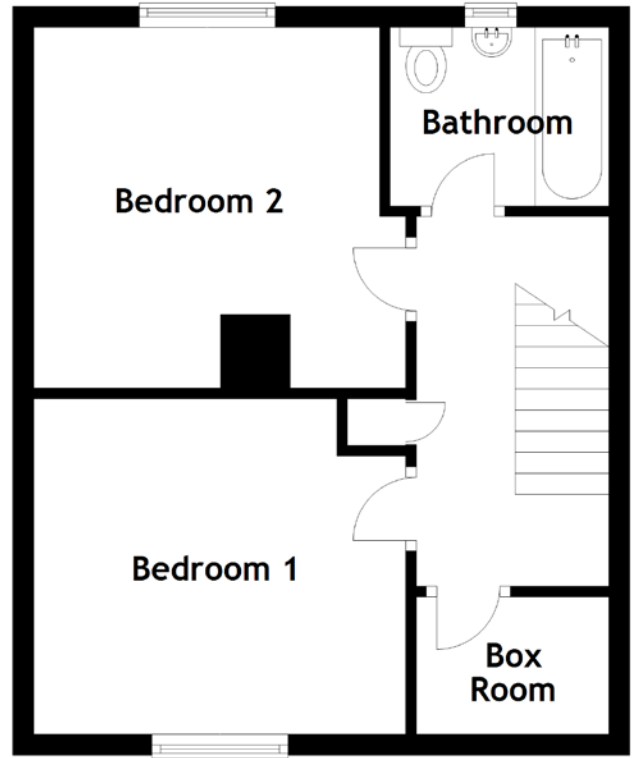
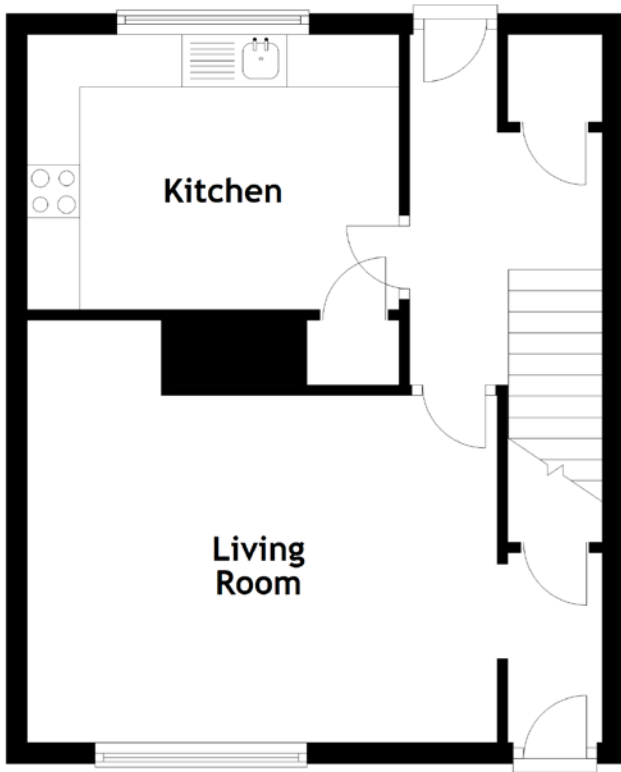


FLOOR PLAN, DIMENSIONS & MAP



Approximate Dimensions
(Taken from the widest point)

Living Room 4.48m (14'8") x 4.02m (13'2")
 Kitchen 3.54m (11'8") x 2.62m (8'7")
 Bedroom 1 3.54m (11'8") x 3.20m (10'6")

Bedroom 2 3.54m (11'8") x 3.44m (11'3")
 Box Room 1.90m (6'3") x 1.31m (4'4")
 Bathroom 2.10m (6'11") x 1.70m (5'7")

Gross internal floor area (m²): 74m²
 EPC Rating: D

