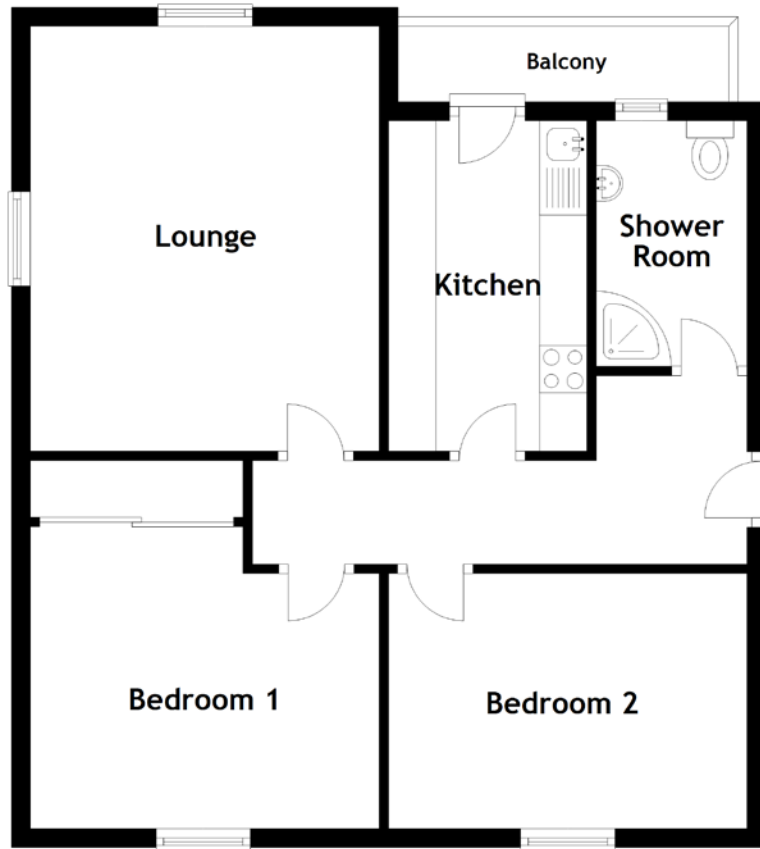


FLOOR PLAN, DIMENSIONS & MAP



Approximate Dimensions (Taken from the widest point)

Lounge 4.50m (14'9") x 3.70m (12'2")
 Kitchen 3.50m (11'6") x 2.10m (6'11")
 Shower Room 2.60m (8'6") x 1.60m (5'3")

Bedroom 1 3.70m (12'2") x 3.20m (10'6")
 Bedroom 2 3.80m (12'6") x 2.70m (8'10")
 Balcony 3.50m (11'6") x 0.80m (2'7")

Gross internal floor area (m²): 61m² | EPC Rating: C

