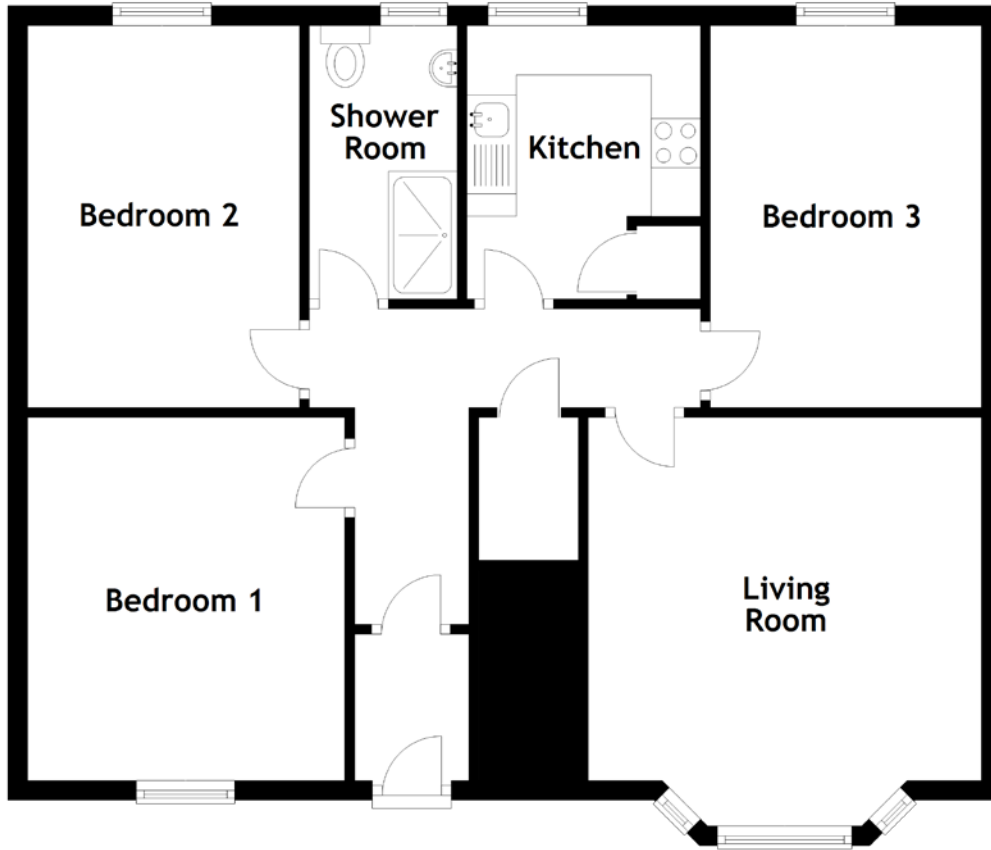


FLOOR PLAN, DIMENSIONS & MAP



Approximate Dimensions
(Taken from the widest point)

Living Room 4.14m (13'7") x 3.99m (13'1")
 Kitchen 2.77m (9'1") x 2.37m (7'9")
 Shower Room 2.77m (9'1") x 1.50m (4'11")
 Bedroom 1 3.68m (12'1") x 3.22m (10'7")

Bedroom 2 3.88m (12'9") x 2.76m (9'1")
 Bedroom 3 3.87m (12'8") x 2.75m (9')

Gross internal floor area (m²): 74m²
 EPC Rating: C

Buyer's Premium Value: £2500.00

