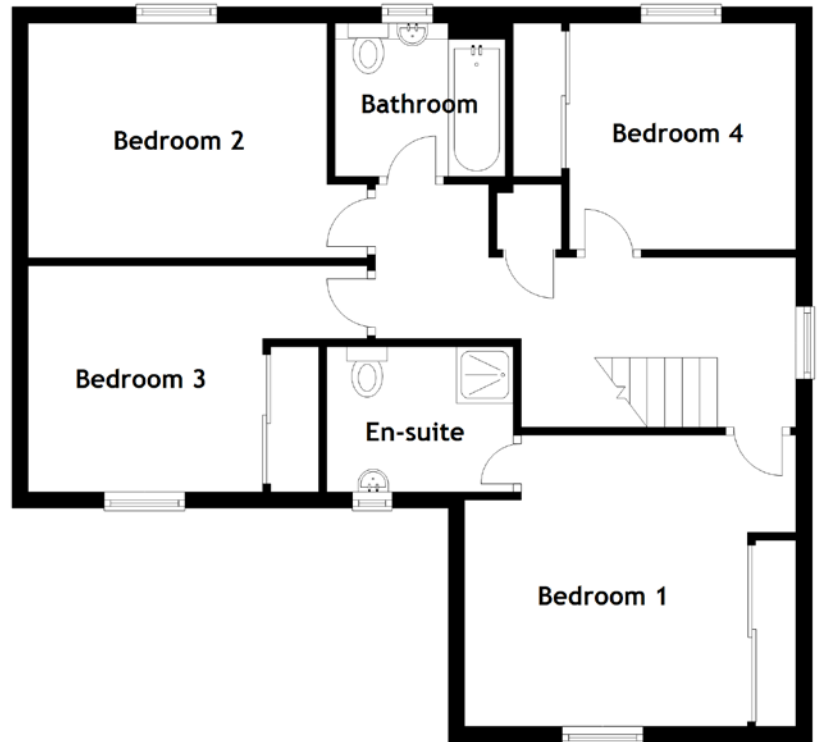
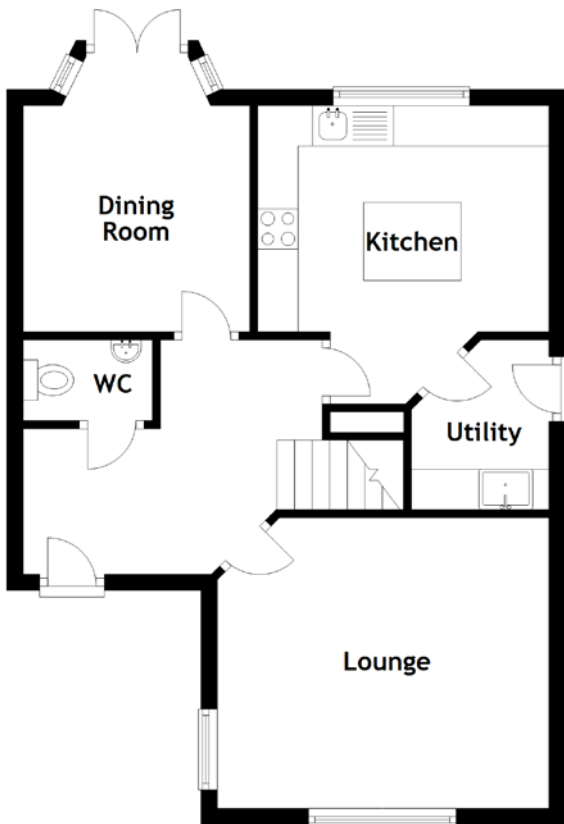


FLOOR PLAN, DIMENSIONS & MAP



Approximate Dimensions
(Taken from the widest point)

Lounge	4.10m (13'5") x 3.60m (11'10")
Kitchen	3.60m (11'10") x 2.80m (9'2")
Dining Room	2.80m (9'2") x 2.80m (9'2")
Utility	2.10m (6'11") x 1.70m (5'7")
WC	1.60m (5'3") x 1.00m (3'3")
Bedroom 1	4.10m (13'5") x 3.60m (11'10")
En-suite	2.30m (7'7") x 1.80m (5'11")

Bedroom 2	4.20m (13'9") x 2.90m (9'6")
Bedroom 3	4.20m (13'9") x 2.79m (9'2")
Bedroom 4	2.80m (9'2") x 2.80m (9'2")
Bathroom	2.10m (6'11") x 1.90m (6'3")

Gross internal floor area (m²): 111m²
EPC Rating: C

Extras: Floor coverings, light fittings, blinds and window dressings.

