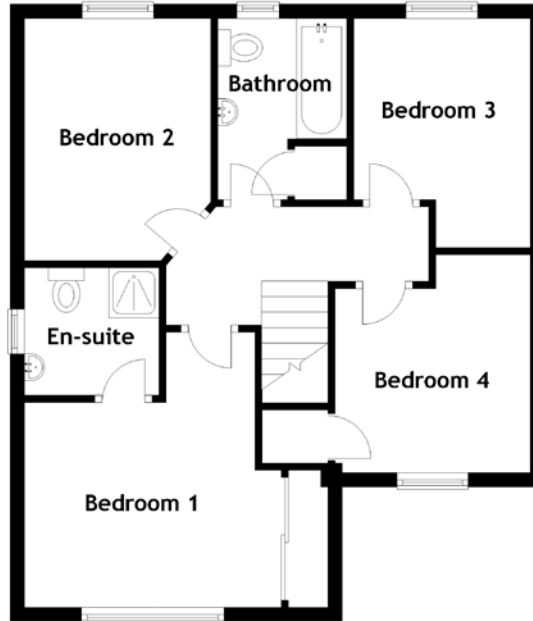
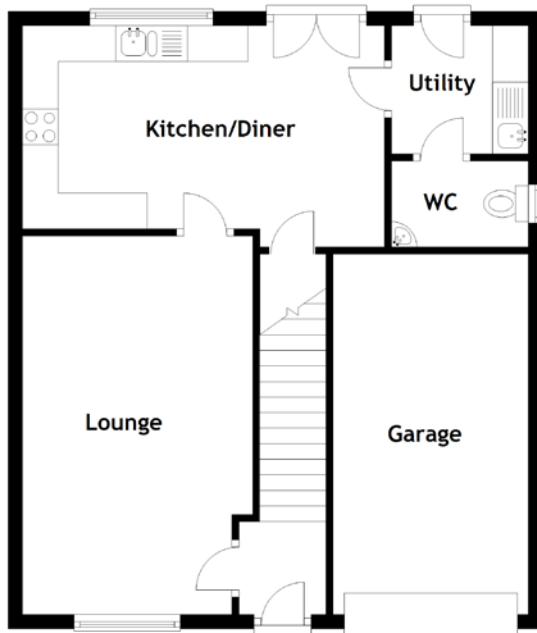


42 Serf Avenue

DUNFERMLINE, KY11 8YZ



Approximate Dimensions
(Taken from the widest point)

Lounge	5.07m (16'8") x 3.22m (10'7")
Kitchen/Diner	5.06m (16'7") x 3.09m (10'2")
Utility	1.91m (6'3") x 1.79m (5'10")
WC	1.91m (6'3") x 1.20m (3'11")
Bedroom 1	3.84m (12'7") x 3.22m (10'7")
En-suite	1.88m (6'2") x 1.78m (5'10")
Bedroom 2	3.38m (11'1") x 2.60m (8'6")
Bedroom 3	3.20m (10'6") x 2.49m (8'2")
Bedroom 4	2.62m (8'7") x 2.57m (8'5")
Bathroom	2.53m (8'4") x 1.80m (5'11")
Garage	5.03m (16'6") x 2.73m (8'11")

Gross internal floor area (m²): 96m²

EPC Rating: C