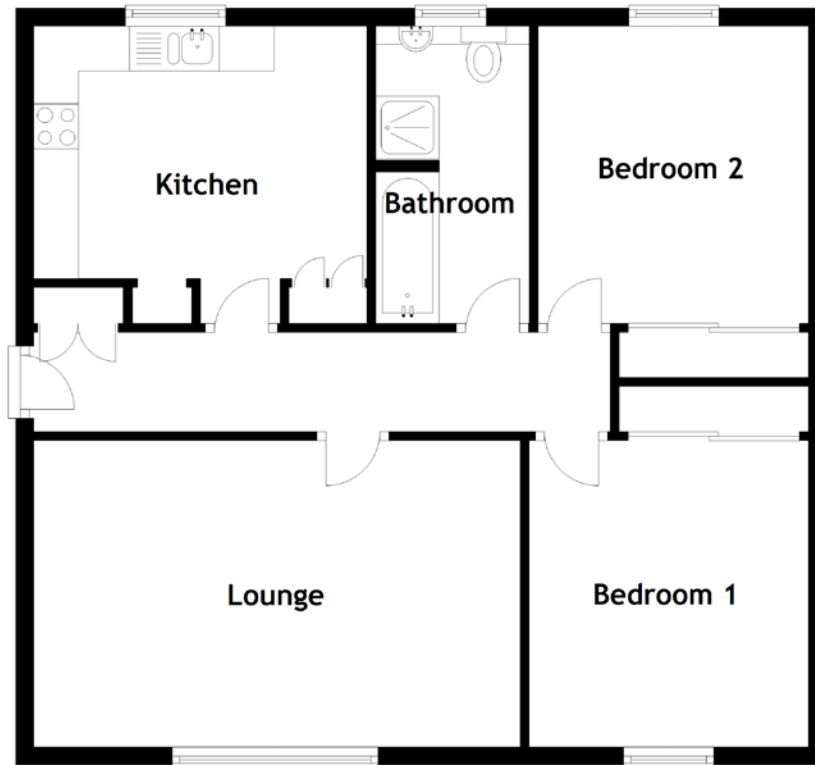


FLOOR PLAN, DIMENSIONS & MAP



Approximate Dimensions (Taken from the widest point)

Lounge	5.40m (17'9") x 3.40m (11'2")
Kitchen	3.70m (12'2") x 3.30m (10'10")
Bedroom 1	3.40m (11'2") x 3.10m (10'2")
Bedroom 2	3.30m (10'10") x 2.80m (9'2")
Bathroom	3.30m (10'10") x 1.70m (5'7")

Gross internal floor area (m²): 69m²
EPC Rating: D

Extras (Included in the sale): All floor coverings, blinds, curtains and light fittings.

