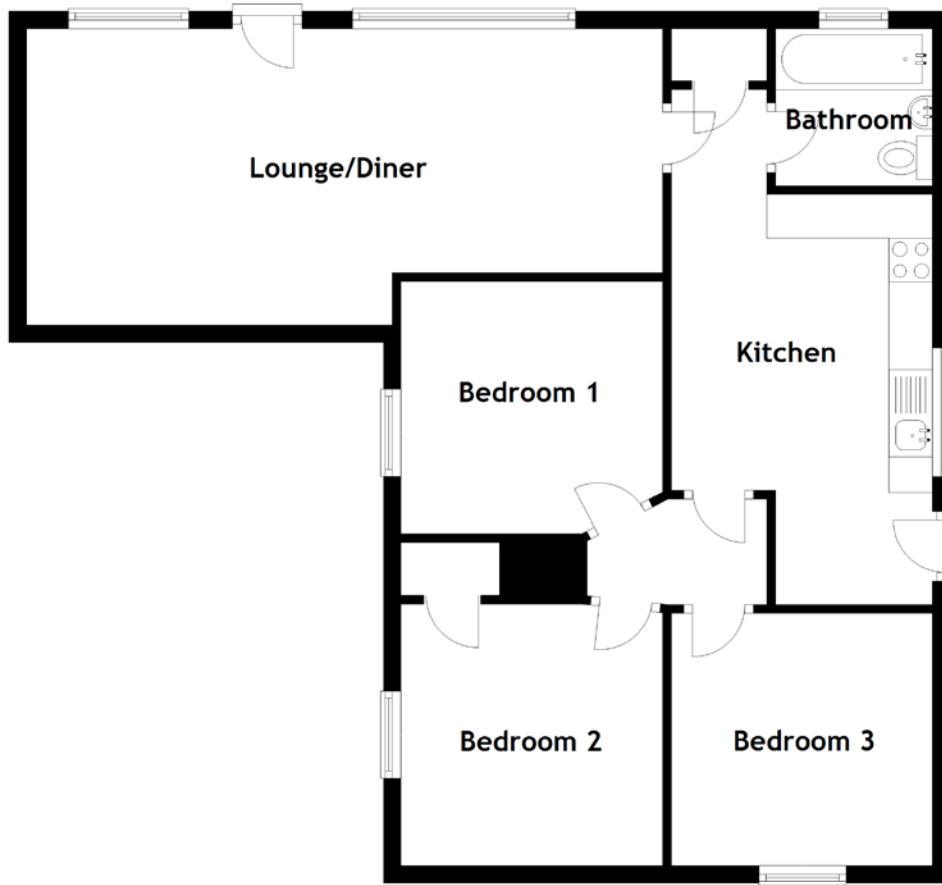


FLOOR PLAN, DIMENSIONS & MAP



Approximate Dimensions
(Taken from the widest point)

Lounge/Diner 7.30m (23'11") x 3.40m (11'2")
Kitchen 4.70m (15'5") x 3.00m (9'10")
Bathroom 1.80m (5'11") x 1.80m (5'11")

Bedroom 1 3.00m (9'10") x 2.90m (9'6")
Bedroom 2 3.00m (9'10") x 3.00m (9'10")
Bedroom 3 3.10m (10'2") x 2.90m (9'6")

Gross internal floor area (m²): 78m²
EPC Rating: F

