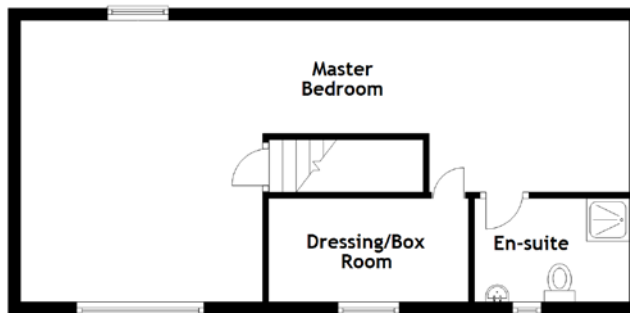
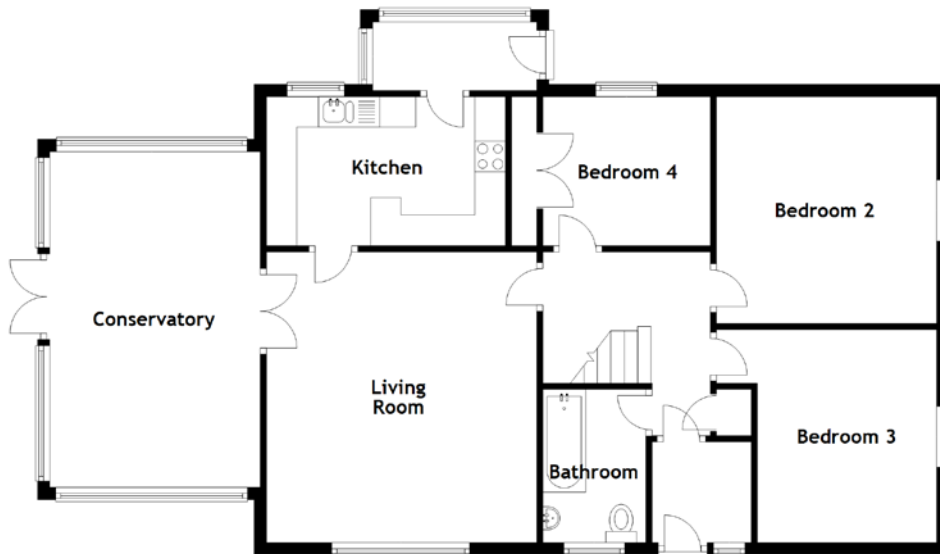


# FLOOR PLAN, DIMENSIONS & MAP



Approximate Dimensions  
(Taken from the widest point)

Living Room	4.75m (15'7") x 4.42m (14'6")
Kitchen	3.91m (12'10") x 2.44m (8')
Conservatory	5.49m (18') x 3.44m (11'3")
Bathroom	2.50m (8'3") x 1.69m (5'6")
Bedroom 2	3.71m (12'2") x 3.60m (11'10")

Bedroom 3	3.60m (11'10") x 3.48m (11'5")
Bedroom 4	2.74m (9') x 2.44m (8')
Master Bedroom	9.95m (32'8") x 2.80m (9'2")
En-suite	2.53m (8'4") x 1.44m (4'9")
Dressing/Box Room	3.22m (10'7") x 1.44m (4'9")

Gross internal floor area (m<sup>2</sup>): 114m<sup>2</sup>  
EPC Rating: D

