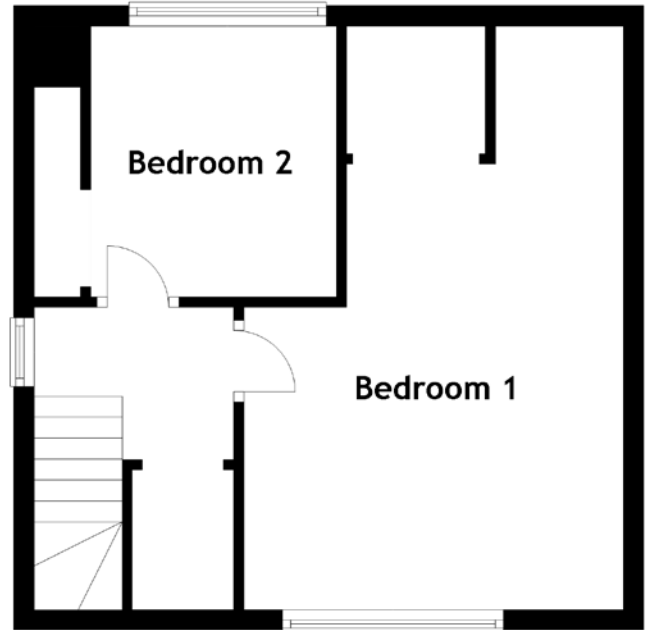
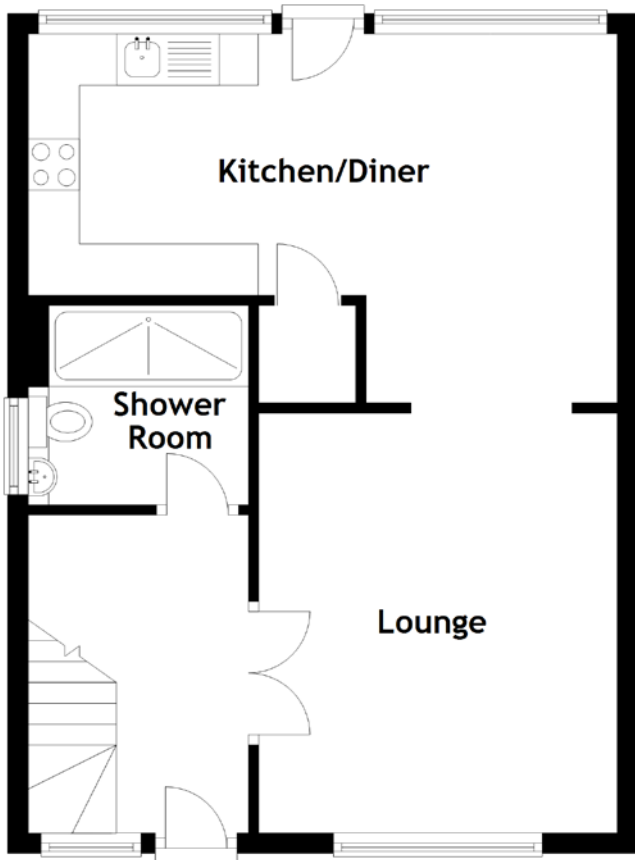


FLOOR PLAN, DIMENSIONS & MAP



Approximate Dimensions (Taken from the widest point)

Lounge	4.10m (13'5") x 3.50m (11'6")
Kitchen/Diner	5.75m (18'10") x 3.60m (11'10")
Shower Room	2.10m (6'11") x 1.95m (6'5")

Bedroom 1	5.70m (18'8") x 3.70m (12'2")
Bedroom 2	2.65m (8'8") x 2.40m (7'10")

Gross internal floor area (m²): 76m²
EPC Rating: D

