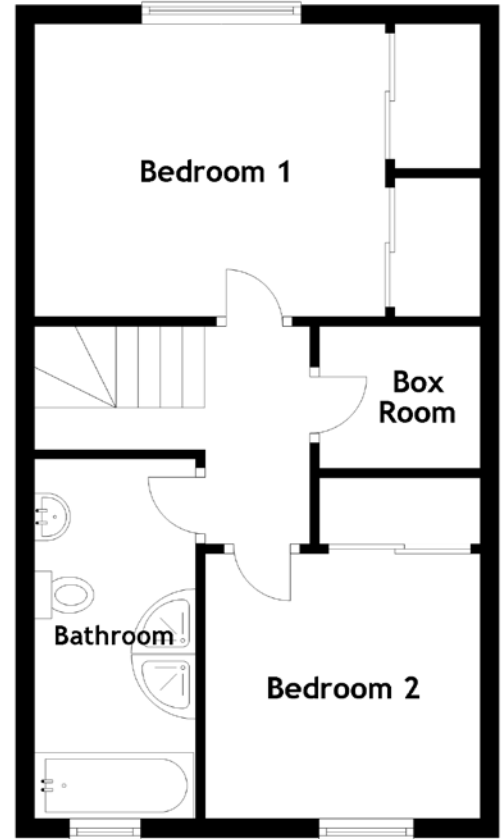
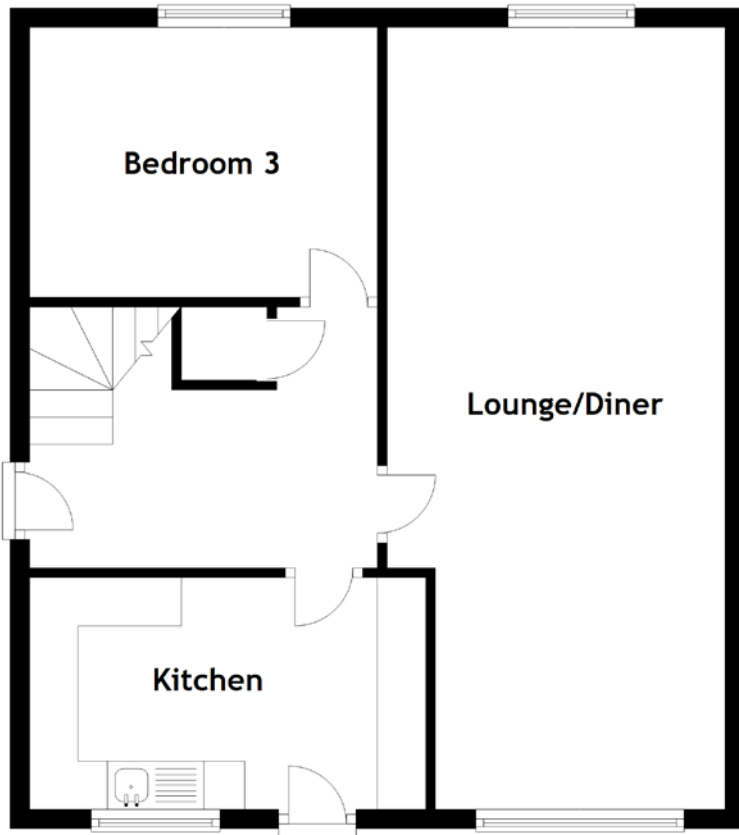


FLOOR PLAN, DIMENSIONS & MAP



Approximate Dimensions
(Taken from the widest point)

Lounge/Diner 8.10m (26'7") x 3.50m (11'6")
 Kitchen 4.10m (13'5") x 2.40m (7'10")
 Bedroom 1 3.70m (12'2") x 3.10m (10'2")
 Bedroom 2 2.90m (9'6") x 2.80m (9'2")

Bedroom 3 3.60m (11'10") x 2.80m (9'2")
 Bathroom 3.80m (12'6") x 1.70m (5'7")

Gross internal floor area (m²): 98m²
 EPC Rating: D

Extras: Floor coverings, light fittings and integrated appliances.

