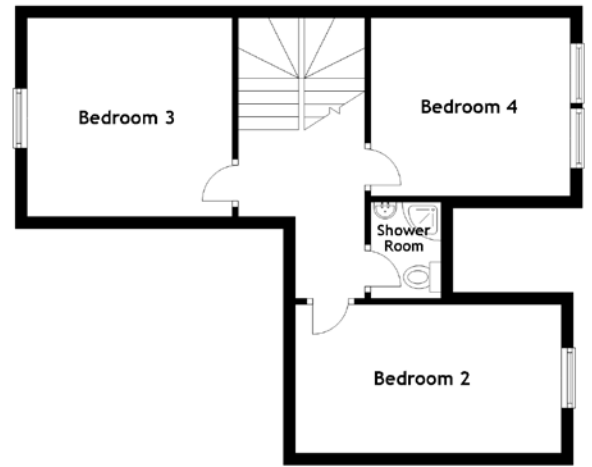
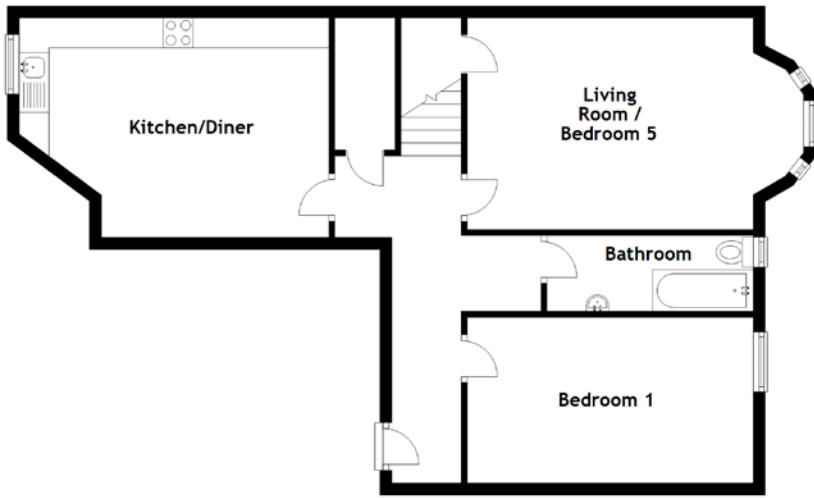


FLOOR PLAN, DIMENSIONS & MAP



Approximate Dimensions
(Taken from the widest point)

Ground Floor	
Living Room/Bedroom 5	5.62m (18'5") x 3.54m (11'7")
Kitchen/Diner	5.18m (17') x 3.67m (12')
Bedroom 1	4.78m (15'8") x 2.77m (9'1")
Bathroom	3.45m (11'4") x 1.27m (4'2")

First Floor	
Shower Room	1.61m (5'3") x 1.17m (3'10")
Bedroom 2	4.45m (14'7") x 2.49m (8'2")
Bedroom 3	3.43m (11'3") x 3.32m (10'11")
Bedroom 4	3.34m (10'11") x 2.98m (9'9")

Gross internal floor area (m²): 110m²
EPC Rating: D

