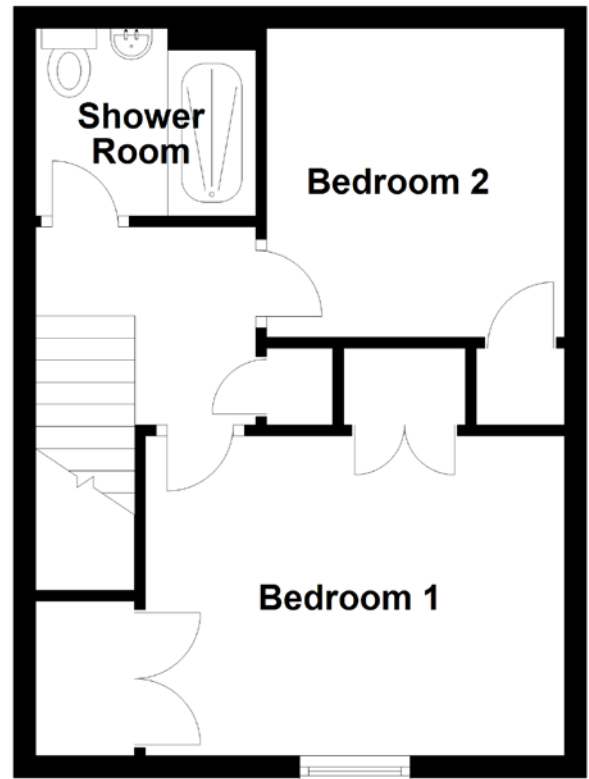
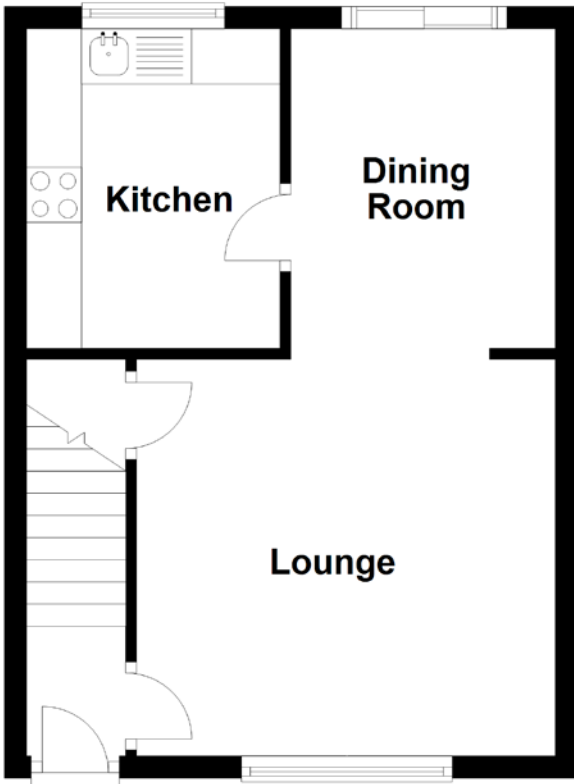


FLOOR PLAN, DIMENSIONS & MAP



Approximate Dimensions (Taken from the widest point)

Lounge	3.80m (12'6") x 3.60m (11'10")
Dining Room	2.90m (9'6") x 2.40m (7'10")
Kitchen	2.90m (9'6") x 2.30m (7'7")

Bedroom 1	3.80m (12'6") x 2.90m (9'6")
Bedroom 2	2.80m (9'2") x 2.70m (8'10")
Shower Room	2.00m (6'7") x 1.70m (5'7")

Gross internal floor area (m²): 64m² | EPC Rating: D

