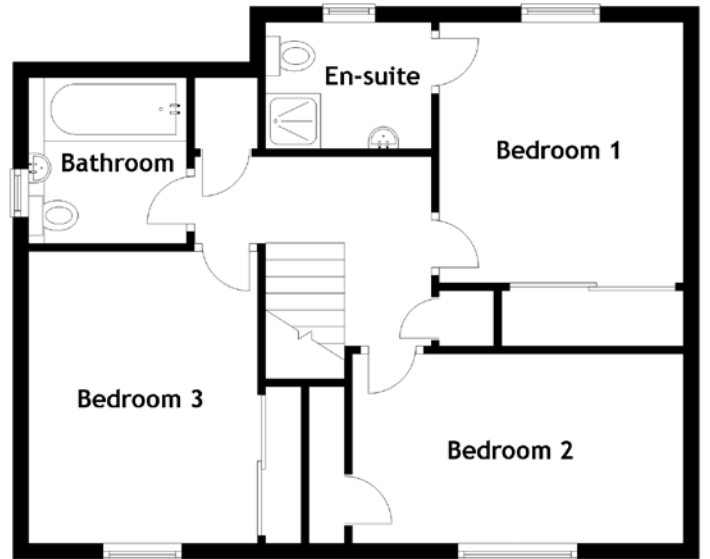
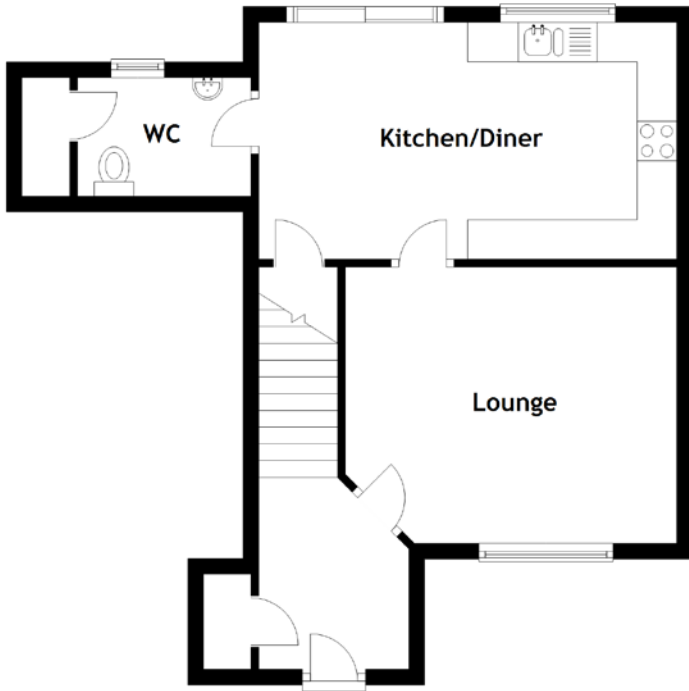


FLOOR PLAN, DIMENSIONS & MAP



Approximate Dimensions
(Taken from the widest point)

Lounge	4.20m (13'9") x 3.50m (11'6")
Kitchen/Diner	5.30m (17'5") x 3.00m (9'10")
WC	2.20m (7'3") x 1.50m (4'11")
Bedroom 1	3.30m (10'10") x 3.10m (10'2")

En-suite	2.10m (6'11") x 1.60m (5'3")
Bedroom 2	4.20m (13'9") x 2.40m (7'10")
Bedroom 3	3.70m (12'2") x 2.90m (9'6")
Bathroom	2.10m (6'11") x 2.00m (6'7")

Gross internal floor area (m²): 97m²
EPC Rating: C

