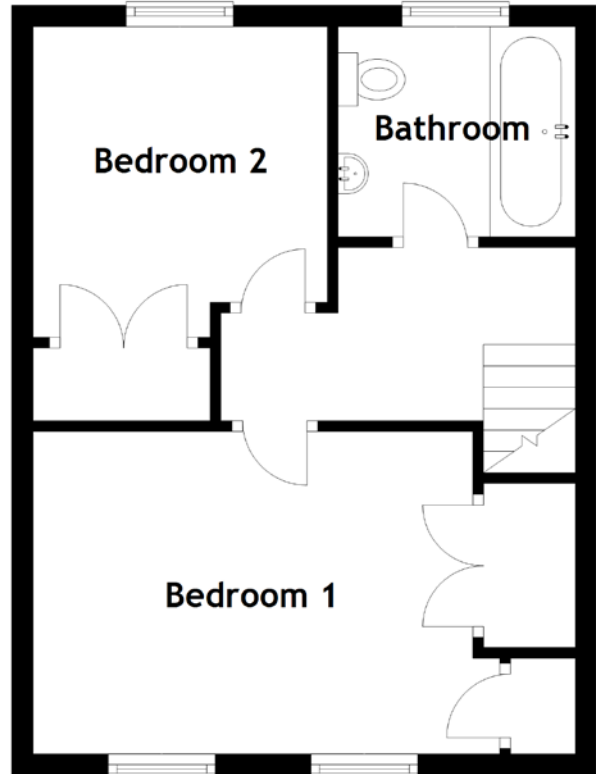
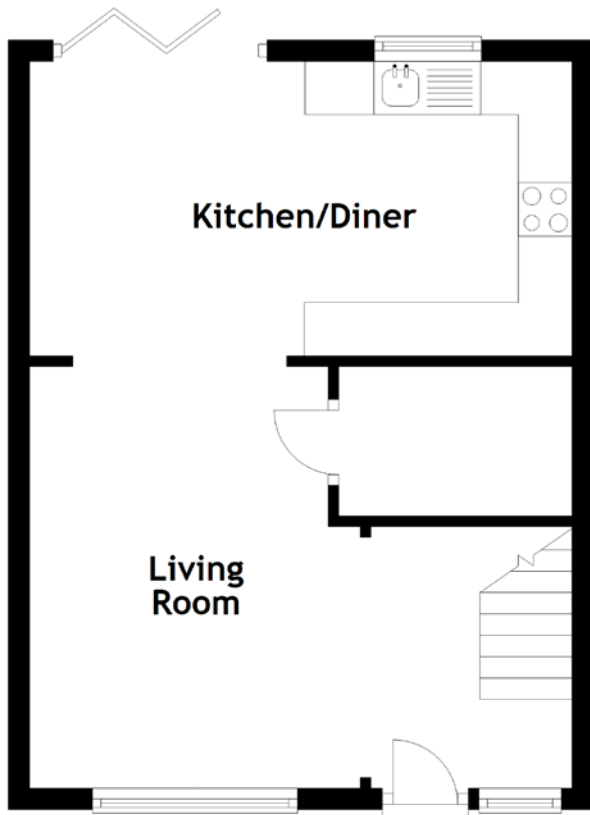


# FLOOR PLAN, DIMENSIONS & MAP



Approximate Dimensions (Taken from the widest point)

Kitchen/Diner	5.07m (16'8") x 2.76m (9'1")
Living Room	3.95m (13') x 3.09m (10'2")
Bathroom	2.22m (7'3") x 1.97m (6'5")

Bedroom 1	4.25m (13'11") x 3.02m (9'11")
Bedroom 2	2.91m (9'7") x 2.75m (9')

Gross internal floor area (m<sup>2</sup>): 70m<sup>2</sup>  
EPC Rating: C

