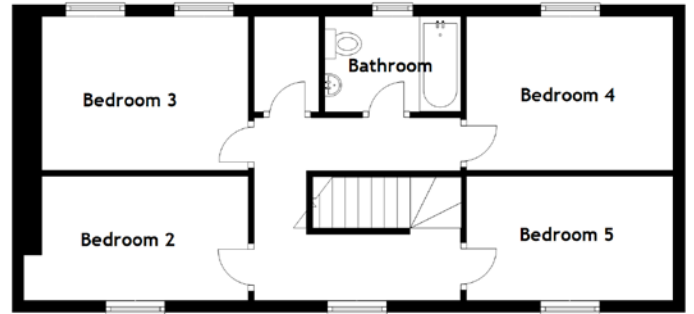


FLOOR PLAN, DIMENSIONS & MAP



Approximate Dimensions
(Taken from the widest point)

Lounge	4.80m (15'9") x 3.60m (11'10")
Kitchen	3.70m (12'2") x 3.60m (11'10")
Utility	4.20m (13'9") x 2.90m (9'6")
Shower Room	1.50m (4'11") x 1.50m (4'11")
Master Bedroom	4.80m (15'9") x 3.60m (11'10")
Dressing Area	2.50m (8'2") x 2.10m (6'11")

En-suite	2.50m (8'2") x 2.10m (6'11")
Bedroom 2	3.70m (12'2") x 2.10m (6'11")
Bedroom 3	3.70m (12'2") x 2.50m (8'2")
Bedroom 4	3.50m (11'6") x 2.50m (8'2")
Bedroom 5	3.50m (11'6") x 2.10m (6'11")
Bathroom	2.30m (7'7") x 1.60m (5'3")

Gross internal floor area (m²): 139m²
EPC Rating: E

