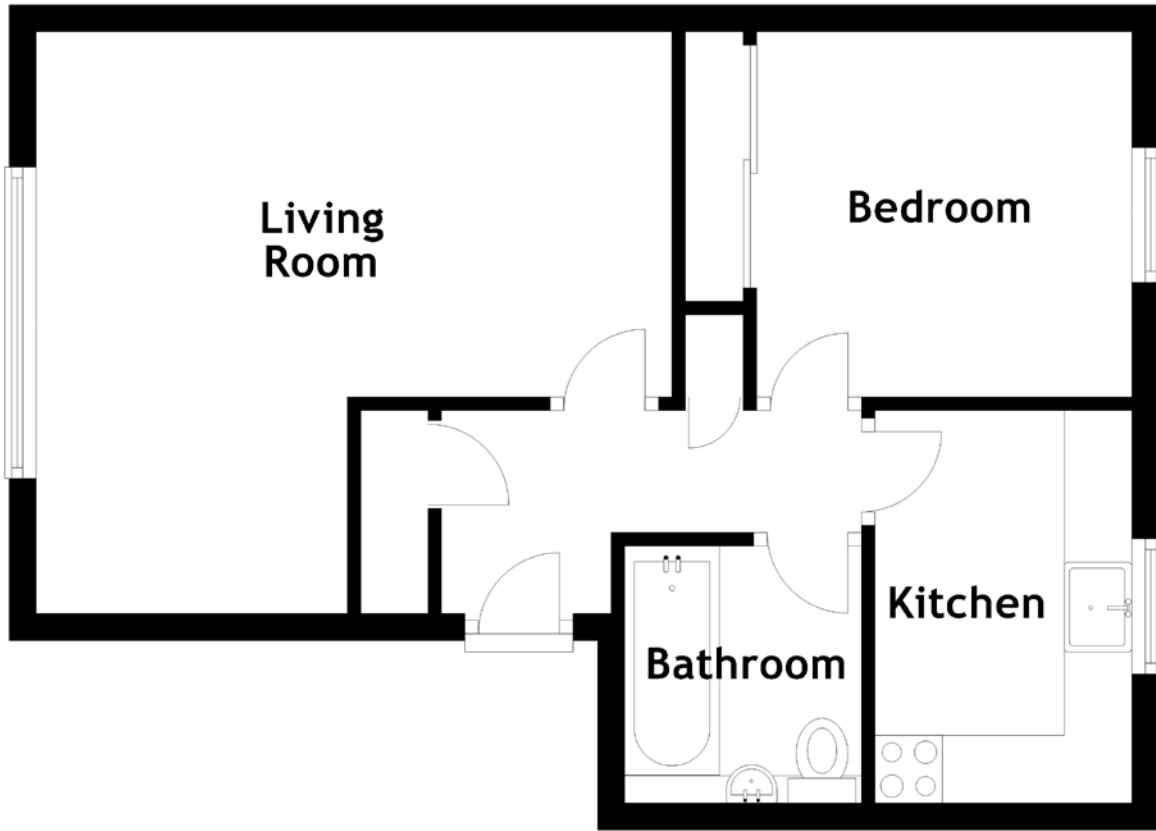


FLOOR PLAN, DIMENSIONS & MAP



Approximate Dimensions
(Taken from the widest point)

Living Room
Kitchen

4.70m (15'5") x 4.30m (14'1")
2.90m (9'6") x 1.90m (6'3")

Bedroom
Bathroom

2.77m (9'1") x 2.70m (8'10")
1.90m (6'3") x 1.75m (5'9")

Gross internal floor area (m²): 44m²
EPC Rating: C

