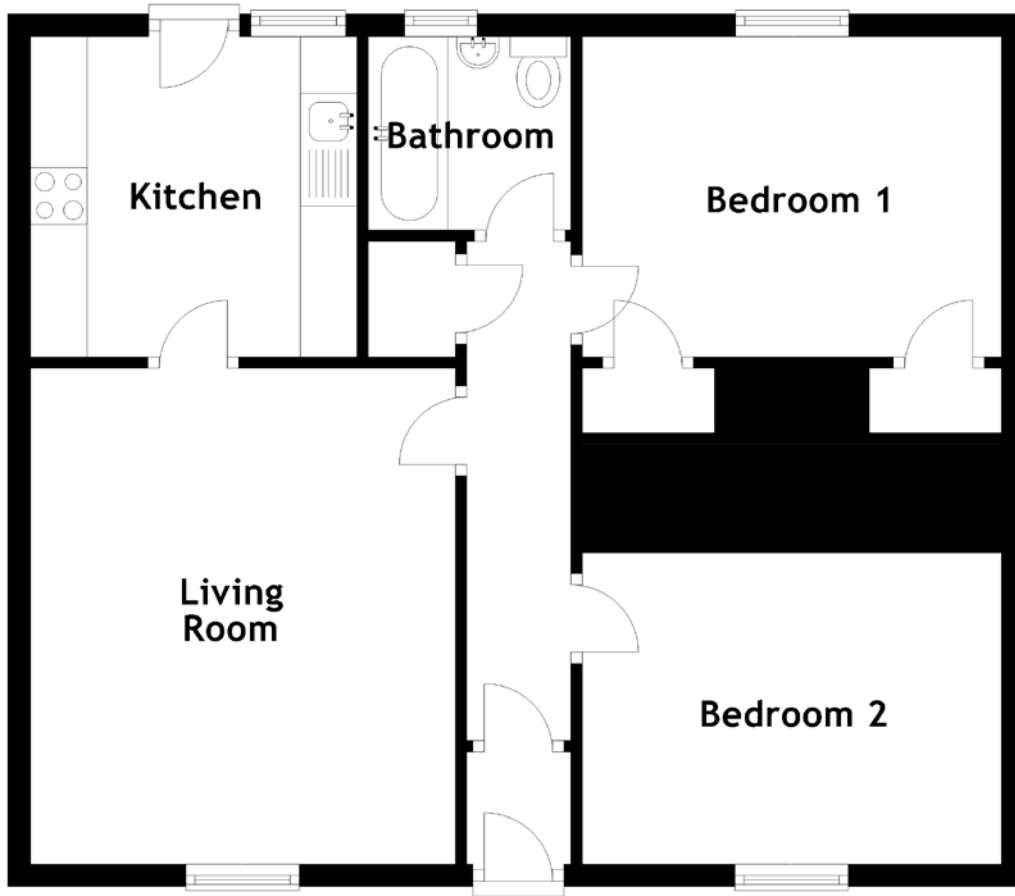


FLOOR PLAN, DIMENSIONS & MAP



Approximate Dimensions (Taken from the widest point)

Living Room 4.38m (14'4") x 3.75m (12'4")
Kitchen 2.88m (9'5") x 2.83m (9'3")
Bathroom 1.79m (5'10") x 1.71m (5'7")

Bedroom 1 3.70m (12'2") x 2.83m (9'3")
Bedroom 2 3.70m (12'2") x 2.75m (9')

Gross internal floor area (m²): 62m²
EPC Rating: D

