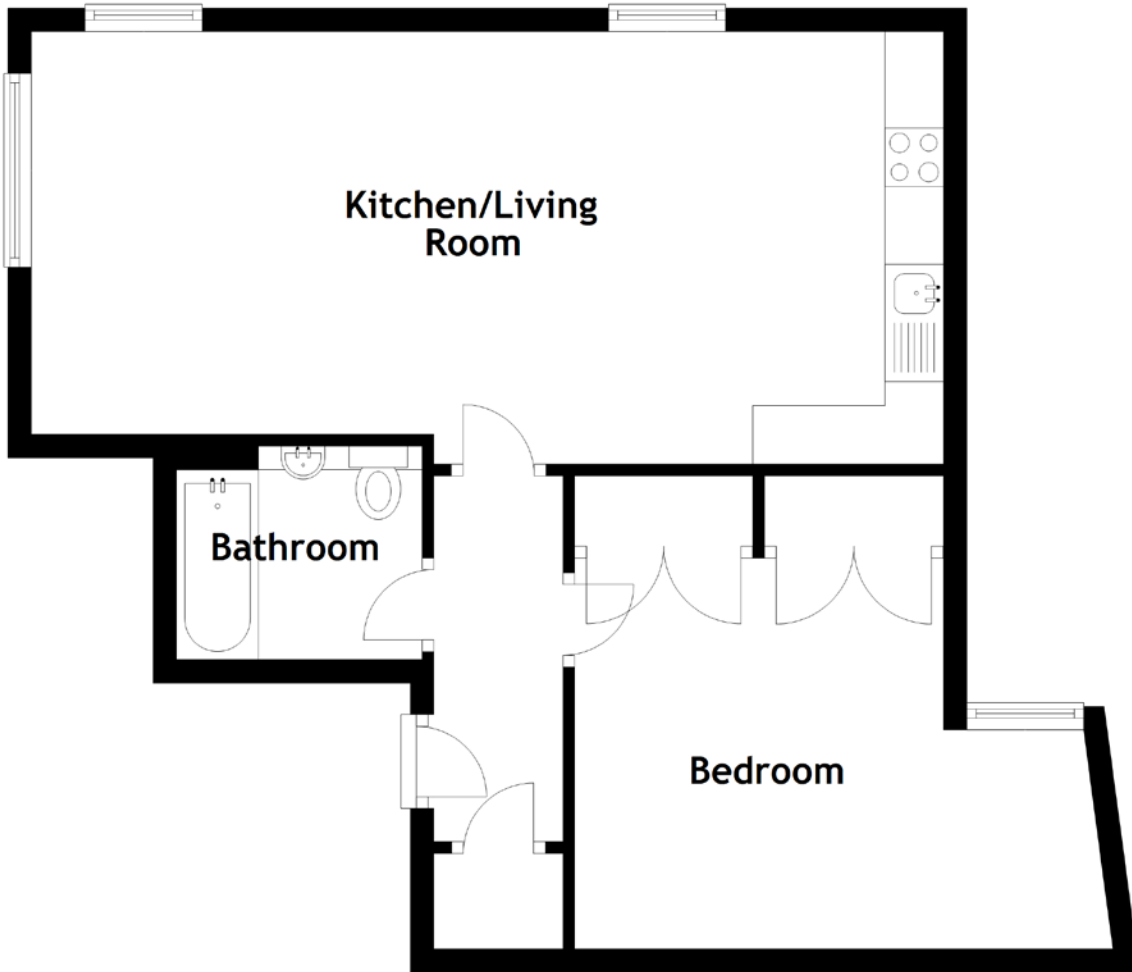


# FLOOR PLAN, DIMENSIONS & MAP



Approximate Dimensions (Taken from the widest point)

Kitchen/Living Room 7.79m (25'7") x 3.69m (12'1")  
Bathroom 2.10m (6'11") x 1.82m (6')  
Bedroom 4.60m (15'1") x 3.33m (10'11")

Gross internal floor area (m<sup>2</sup>): 54m<sup>2</sup>  
EPC Rating: C

