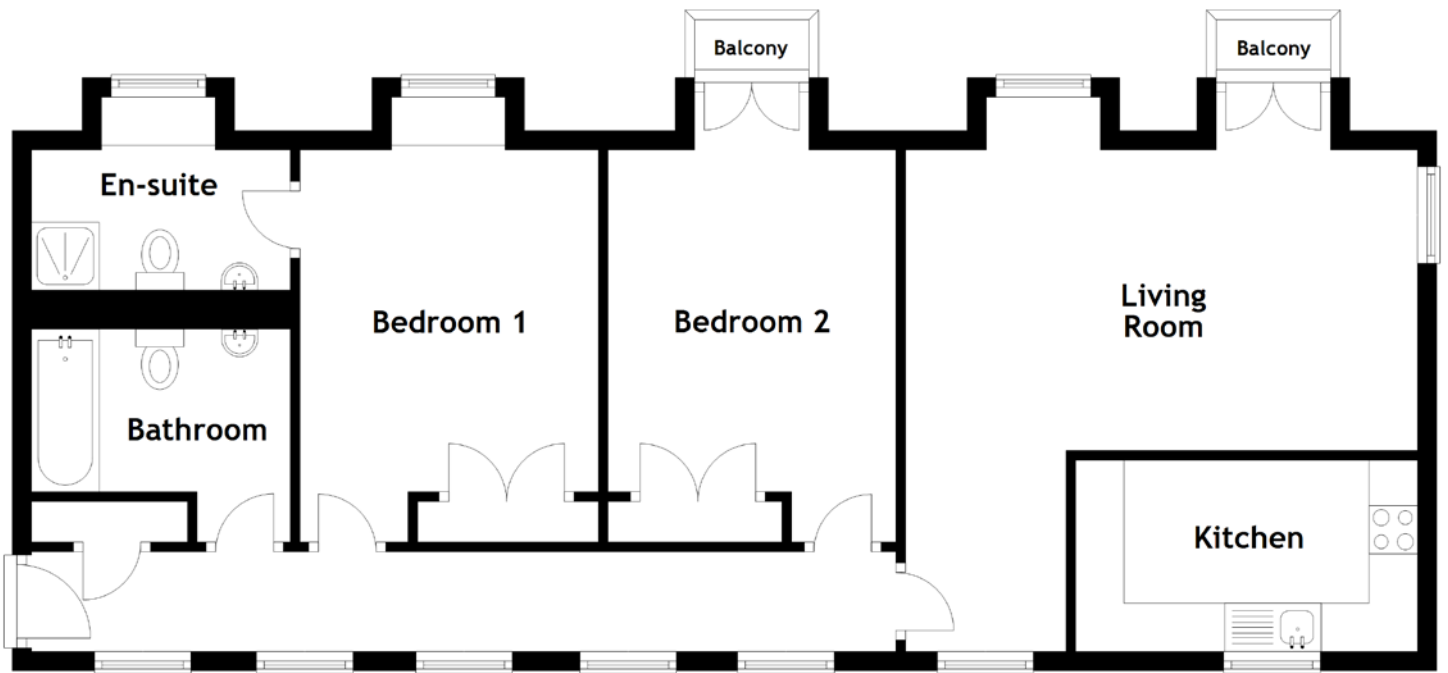


FLOOR PLAN, DIMENSIONS & MAP



Approximate Dimensions
(Taken from the widest point)

Living Room 5.30m (17'5") x 5.19m (17")
 Kitchen 3.54m (11'7") x 1.98m (6'6")
 Bathroom 2.68m (8'10") x 2.19m (7'2")

Bedroom 1 4.06m (13'4") x 3.09m (10'2")
 En-suite 2.68m (8'10") x 1.45m (4'9")
 Bedroom 2 4.06m (13'4") x 2.98m (9'9")

Gross internal floor area (m²): 75m²
 EPC Rating: C

