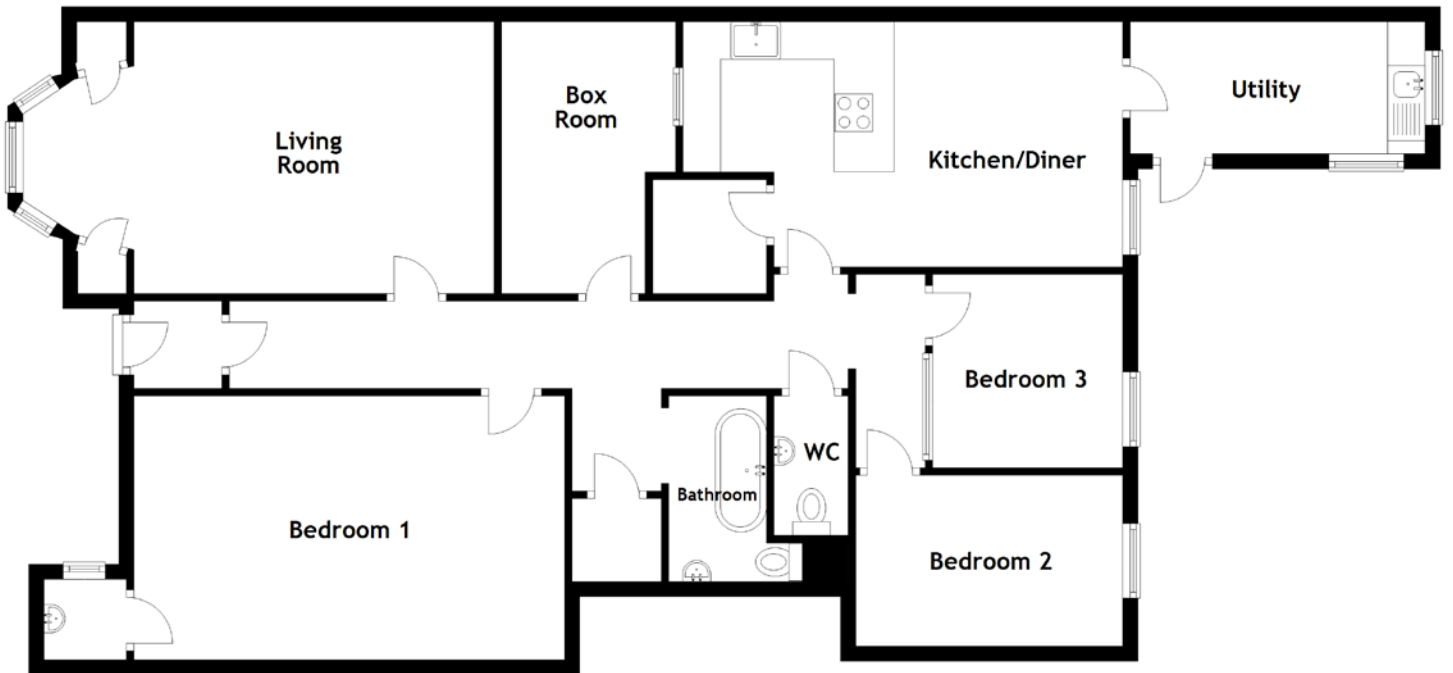


FLOOR PLAN, DIMENSIONS & MAP



Approximate Dimensions (Taken from the widest point)

Living Room	6.28m (20'7") x 3.62m (11'11")
Kitchen/Diner	5.86m (19'3") x 3.26m (10'9")
Utility	3.93m (12'11") x 1.76m (5'9")
WC	1.86m (6'1") x 0.99m (3'3")
Bathroom	2.47m (8'1") x 1.78m (5'10")

Bedroom 1	5.74m (18'10") x 3.51m (11'6")
Bedroom 2	3.56m (11'8") x 2.27m (7'5")
Bedroom 3	2.57m (8'5") x 2.53m (8'4")
Box Room	3.62m (11'11") x 2.32m (7'7")

Gross internal floor area (m²): 113m²
EPC Rating: C

