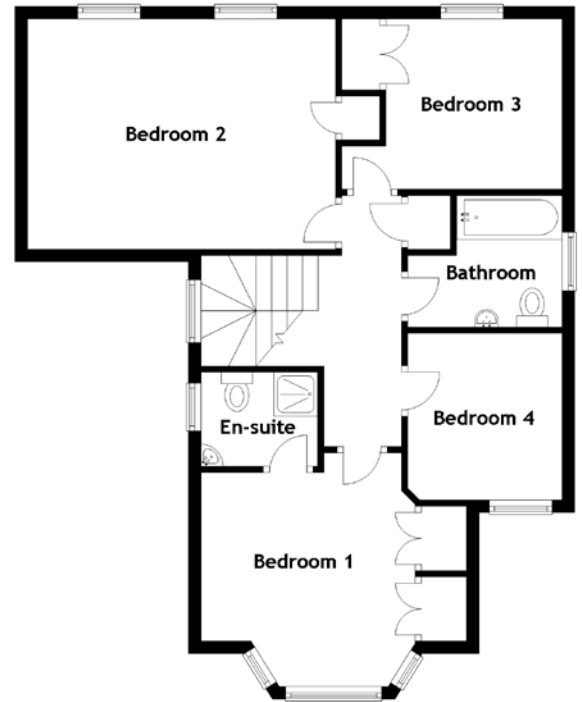
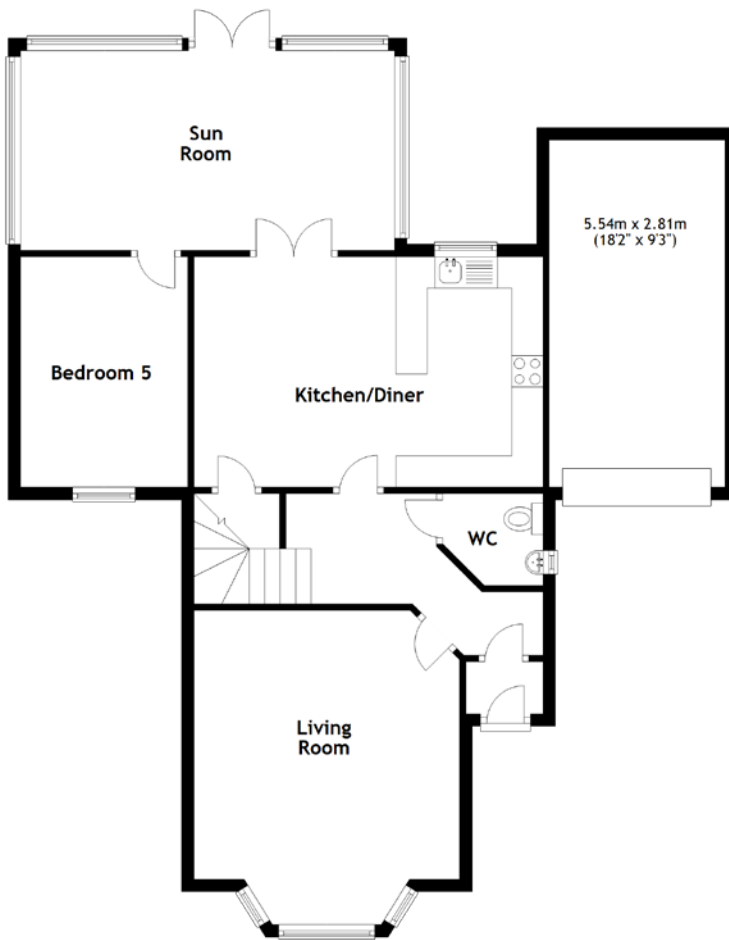


FLOOR PLAN, DIMENSIONS & MAP



Approximate Dimensions (Taken from the widest point)

Living Room	5.02m (16'6") x 4.24m (13'11")
Kitchen/Diner	5.57m (18'3") x 3.68m (12'1")
Sun Room	5.97m (19'7") x 3.19m (10'6")
WC	1.60m (5'3") x 1.47m (4'10")
Bedroom 1	3.73m (12'3") x 3.42m (11'3")
En-suite	1.86m (6'1") x 1.50m (4'11")

Bedroom 2	4.92m (16'2") x 3.71m (12'2")
Bedroom 3	3.52m (11'6") x 2.72m (8'11")
Bedroom 4	2.66m (8'9") x 2.50m (8'2")
Bedroom 5	3.68m (12'1") x 2.67m (8'9")
Bathroom	2.46m (8'1") x 2.10m (6'11")

Gross internal floor area (m²): 152m²
EPC Rating: C

