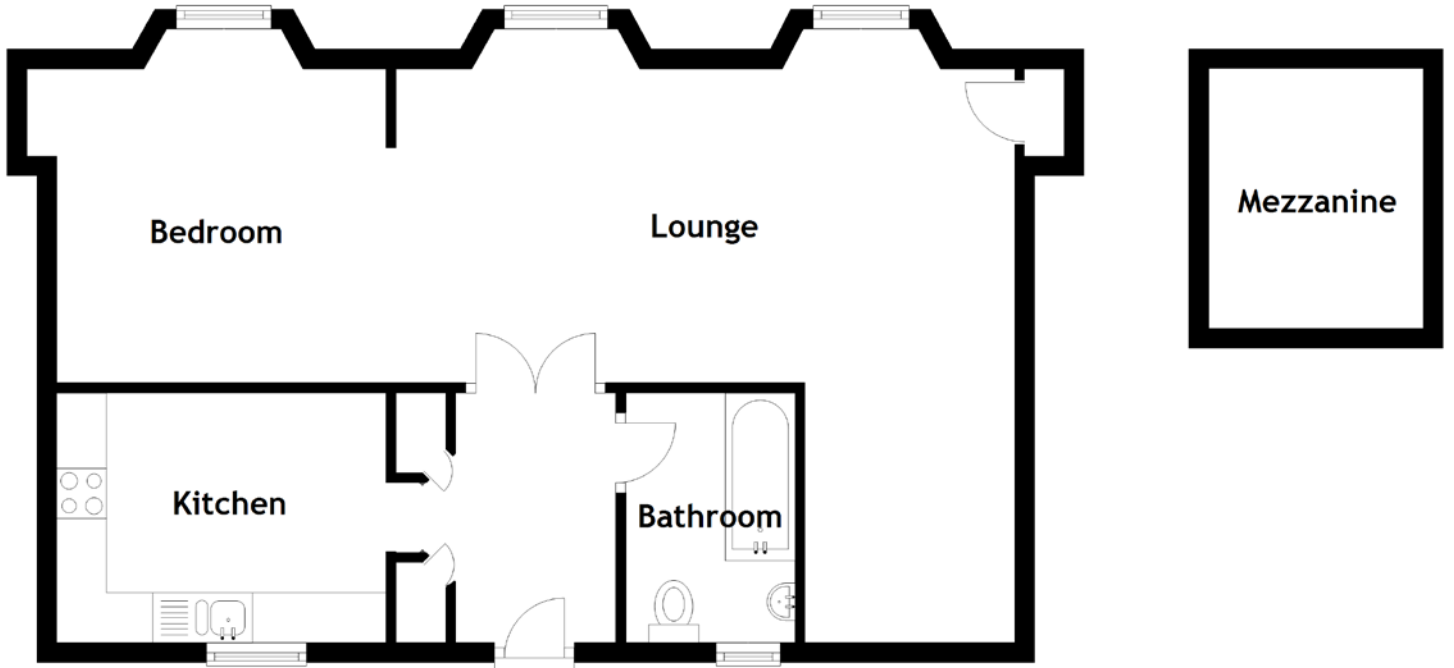


FLOOR PLAN, DIMENSIONS & MAP



Approximate Dimensions (Taken from the widest point)

Lounge	6.20m (20'4") x 6.15m (20'2")
Mezzanine	2.60m (8'6") x 2.15m (7')
Kitchen	3.30m (10'10") x 2.50m (8'2")
Bathroom	2.50m (8'2") x 1.70m (5'7")
Bedroom	3.55m (11'8") x 3.30m (10'10")

Gross internal floor area (m²): 51m²
EPC Rating: C

Extras: Floor coverings, light fittings, blinds and window dressings.

