

Shillinghill,
Temple, EH23 4SH



Approx. Gross Internal Area

3258 Sq Ft - 302.67 Sq M

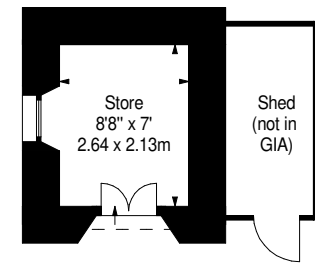
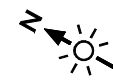
Store

Approx. Gross Internal Area

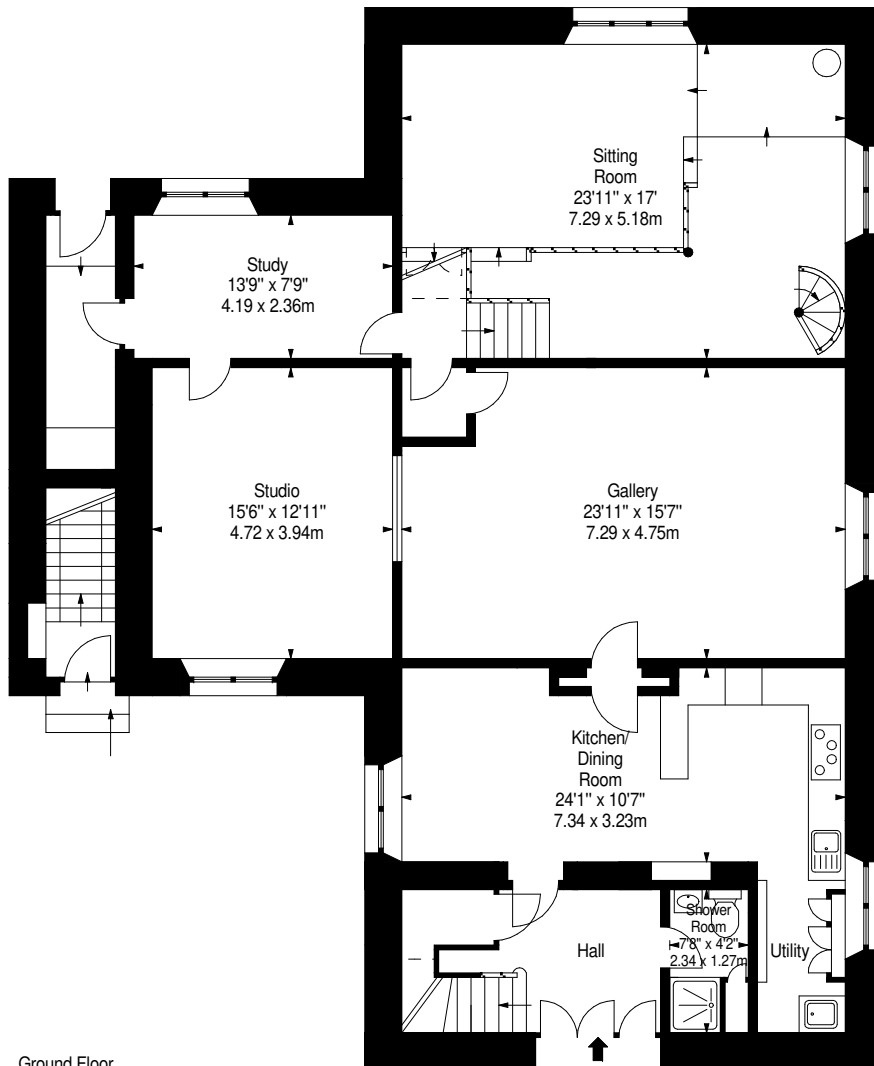
64 Sq Ft - 5.95 Sq M

For identification only. Not to scale.

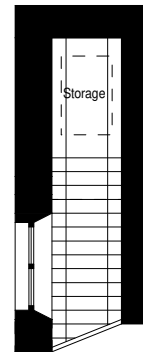
© SquareFoot 2024



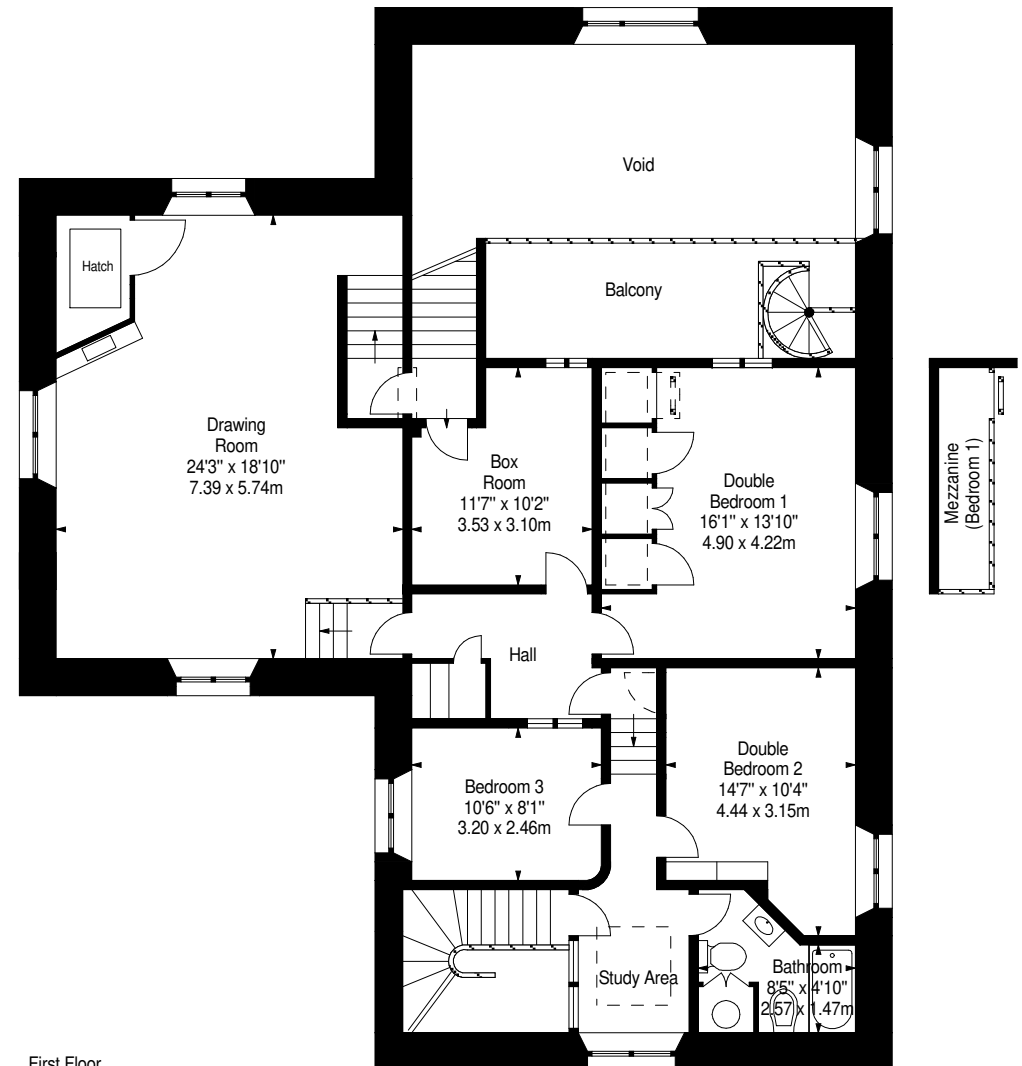
Lower Ground Floor



Ground Floor



Ground
Floor
Half Landing



First Floor