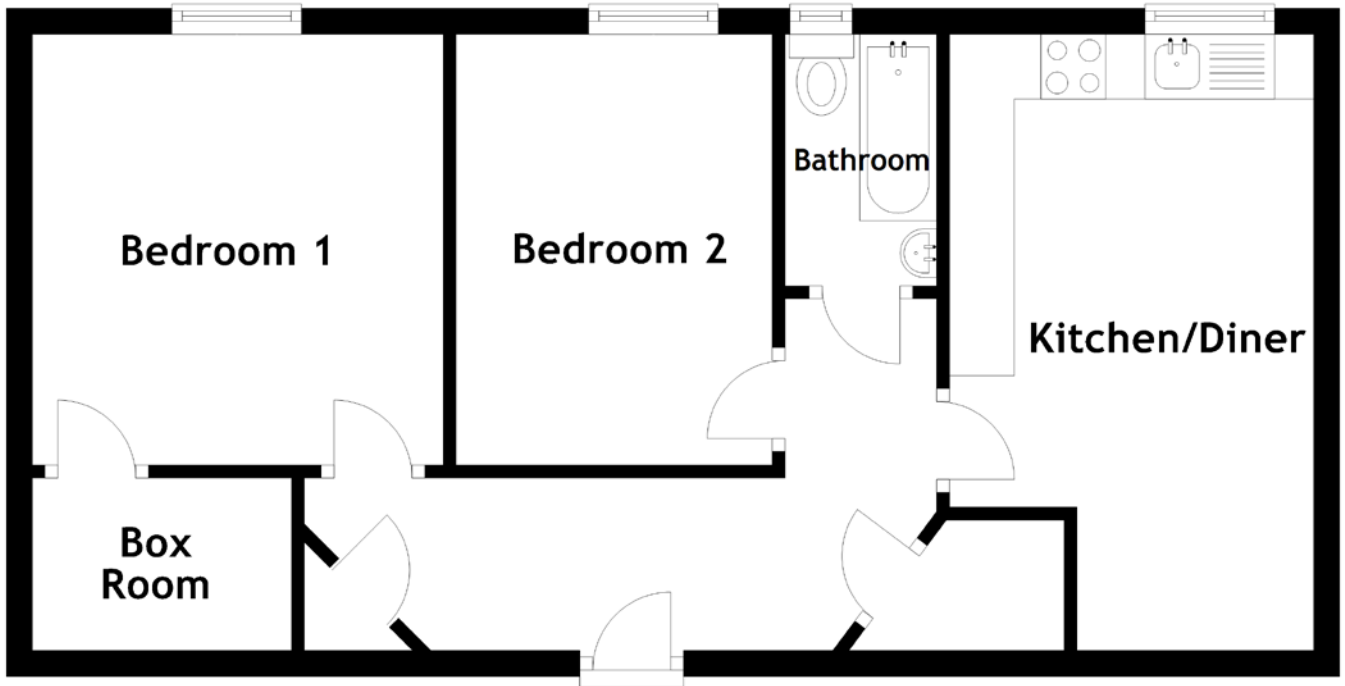


# FLOOR PLAN, DIMENSIONS & MAP



Approximate Dimensions (Taken from the widest point)

Kitchen/Diner 4.87m (16') x 2.81m (9'3")  
 Bedroom 1 3.32m (10'11") x 3.17m (10'5")  
 Box Room 2.00m (6'7") x 1.33m (4'4")

Bedroom 2 3.32m (10'11") x 2.44m (8")  
 Bathroom 1.94m (6'4") x 1.17m (3'10")

Gross internal floor area (m<sup>2</sup>): 49m<sup>2</sup>  
 EPC Rating: E

