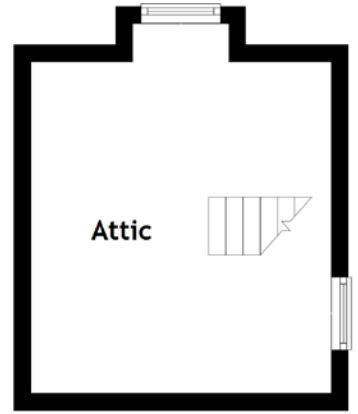
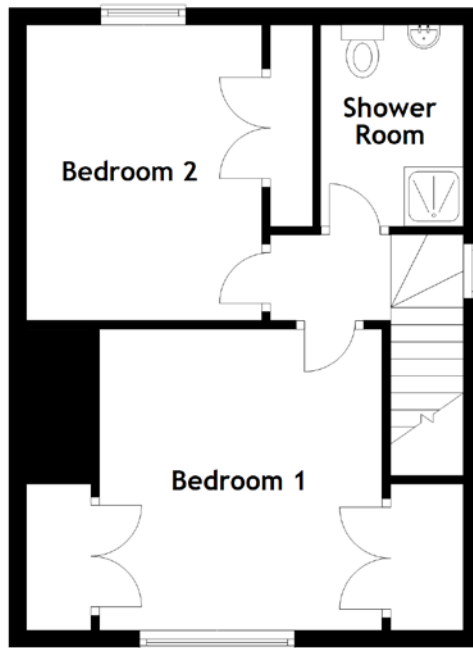
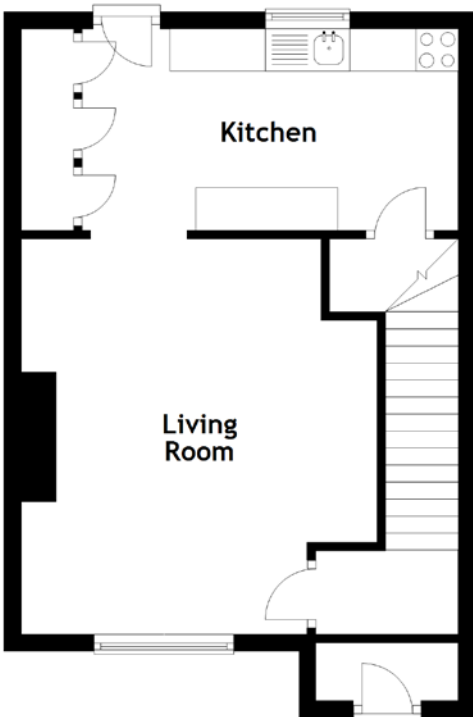


# FLOOR PLAN, DIMENSIONS & MAP



Approximate Dimensions  
(Taken from the widest point)

Living Room 4.68m (15'4") x 4.22m (13'10")  
 Kitchen 4.45m (14'7") x 2.38m (7'10")  
 Bedroom 1 3.56m (11'8") x 3.34m (11')

Bedroom 2 3.50m (11'6") x 2.79m (9'2")  
 Shower Room 2.38m (7'10") x 1.70m (5'7")  
 Attic 3.92m (12'10") x 3.56m (11'8")

Gross internal floor area (m<sup>2</sup>): 75m<sup>2</sup>  
 EPC Rating: D

