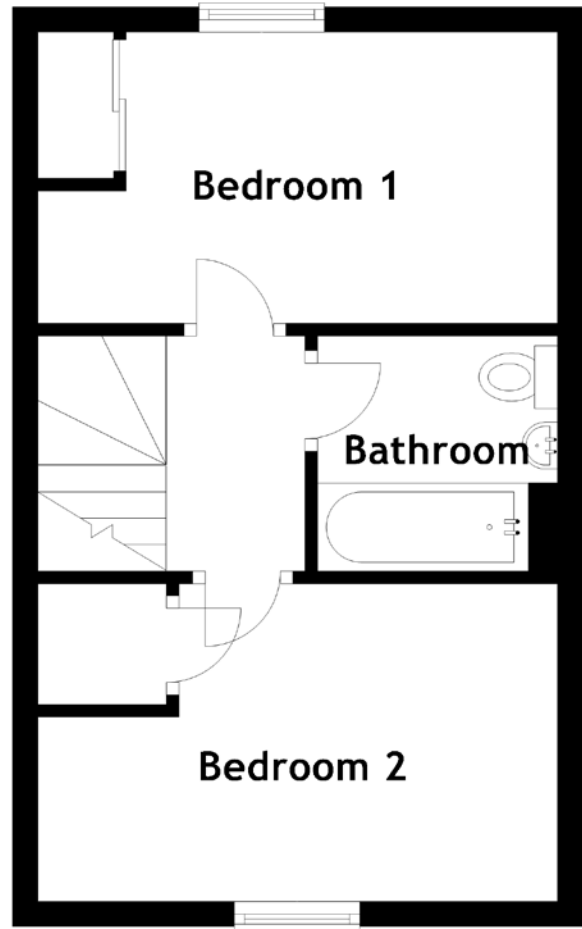
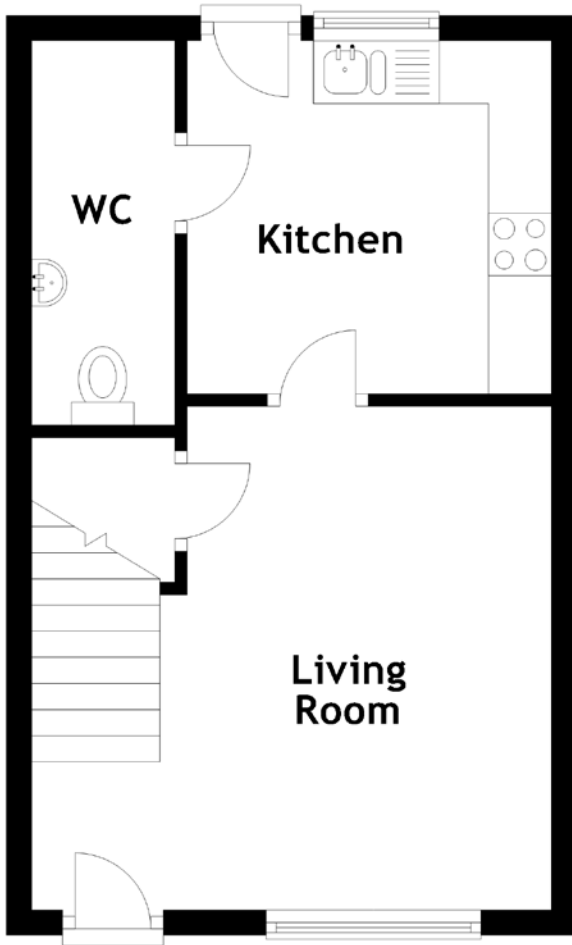


# FLOOR PLAN, DIMENSIONS & MAP



Approximate Dimensions  
(Taken from the widest point)

Living Room 4.14m (13'7") x 4.01m (13'2")  
 Kitchen 2.90m (9'6") x 2.81m (9'3")  
 WC 3.05m (10') x 1.14m (3'9")

Bedroom 1 4.14m (13'7") x 2.32m (7'7")  
 Bedroom 2 4.14m (13'7") x 2.53m (8'4")  
 Bathroom 1.95m (6'5") x 1.91m (6'3")

Gross internal floor area (m<sup>2</sup>): 59m<sup>2</sup>  
 EPC Rating: C

