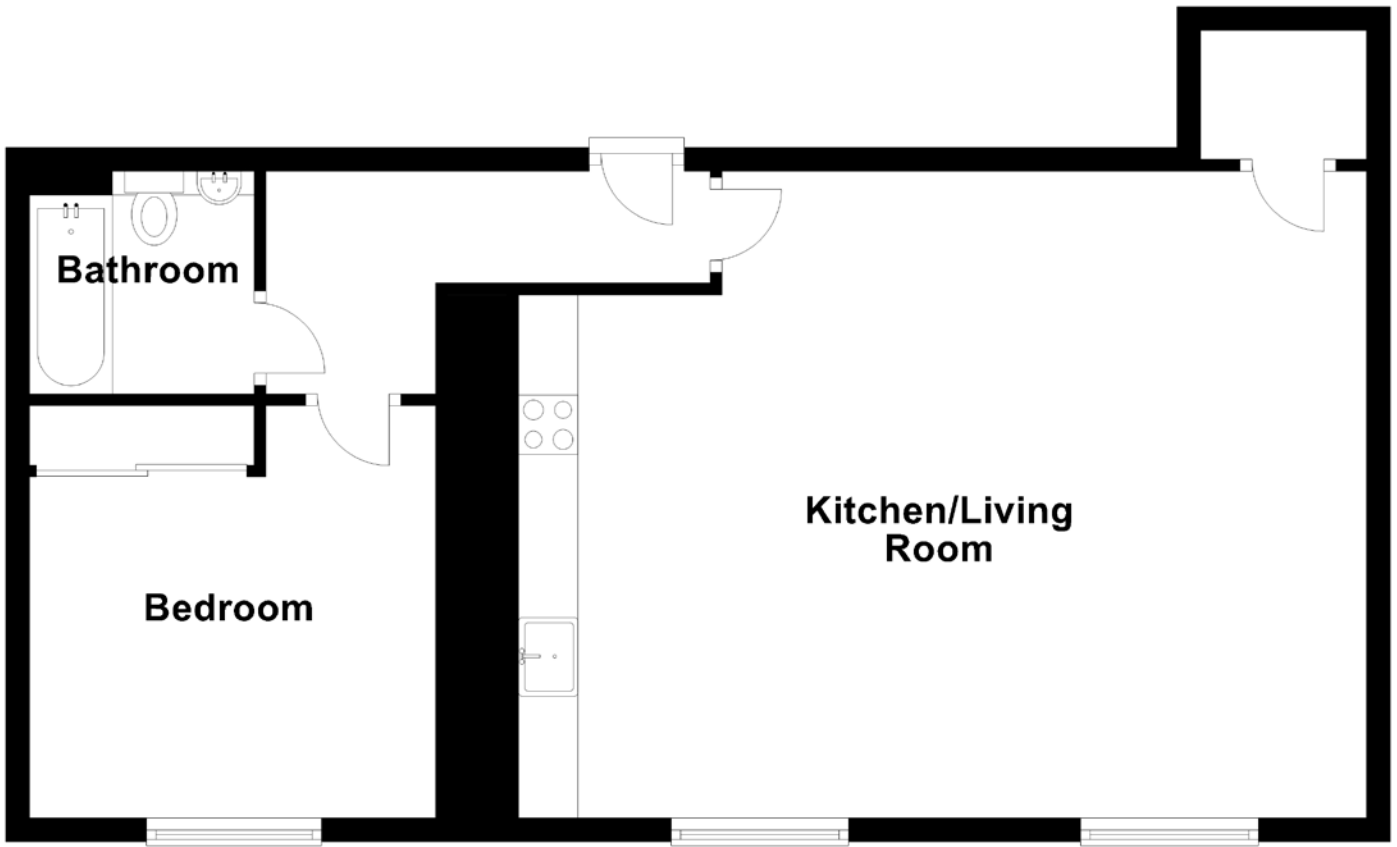


FLOOR PLAN, DIMENSIONS & MAP



Approximate Dimensions (Taken from the widest point)

Kitchen/Living Room 7.16m (23'6") x 5.46m (17'11")
 Bedroom 3.48m (11'5") x 3.43m (11'3")

Bathroom

1.90m (6'3") x 1.88m (6'2")

Gross internal floor area (m²): 62m²
 EPC Rating: C

