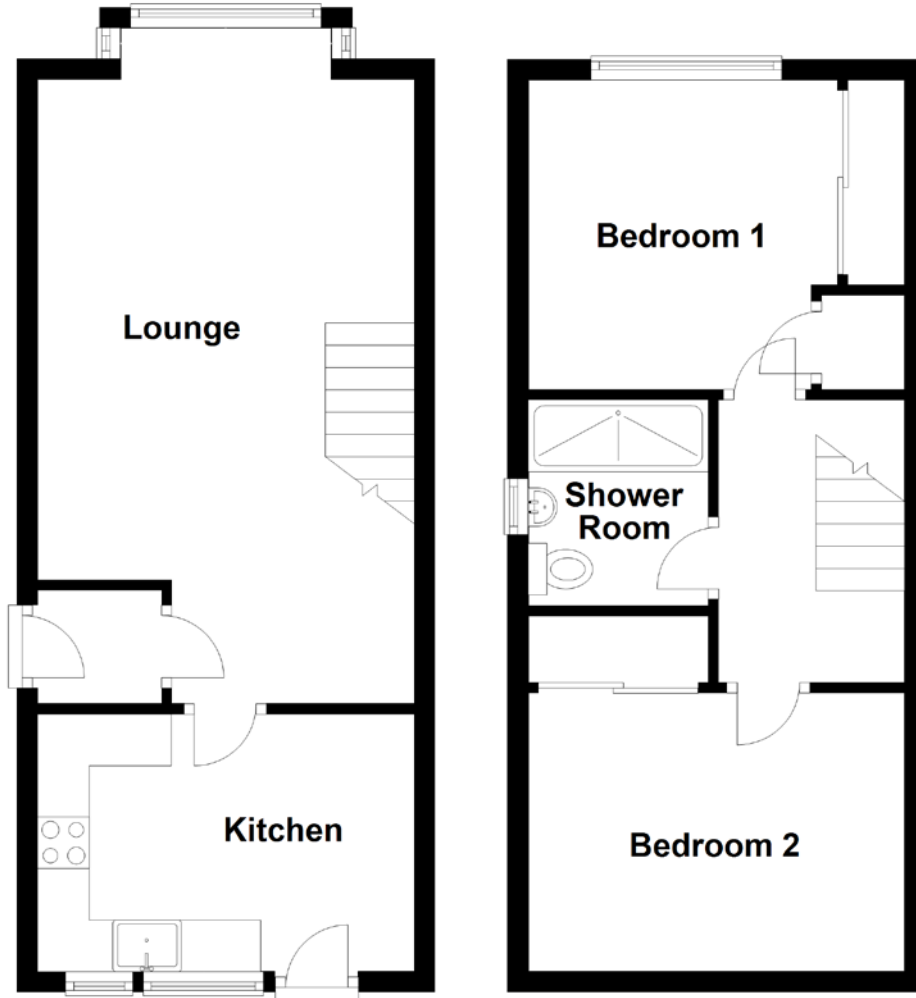


FLOOR PLAN, DIMENSIONS & MAP



Approximate Dimensions (Taken from the widest point)

Lounge	6.05m (19'10") x 3.65m (12')
Kitchen	3.65m (12') x 2.50m (8'2")
Bedroom 1	3.00m (9'10") x 3.00m (9'10")
Bedroom 2	3.65m (12') x 2.70m (8'10")

Shower Room

2.00m (6'7") x 1.75m (5'9")

Gross internal floor area (m²): 62m² | EPC Rating: C

Extras: Floor coverings, light fittings, blinds, window dressings and integrated appliances.

