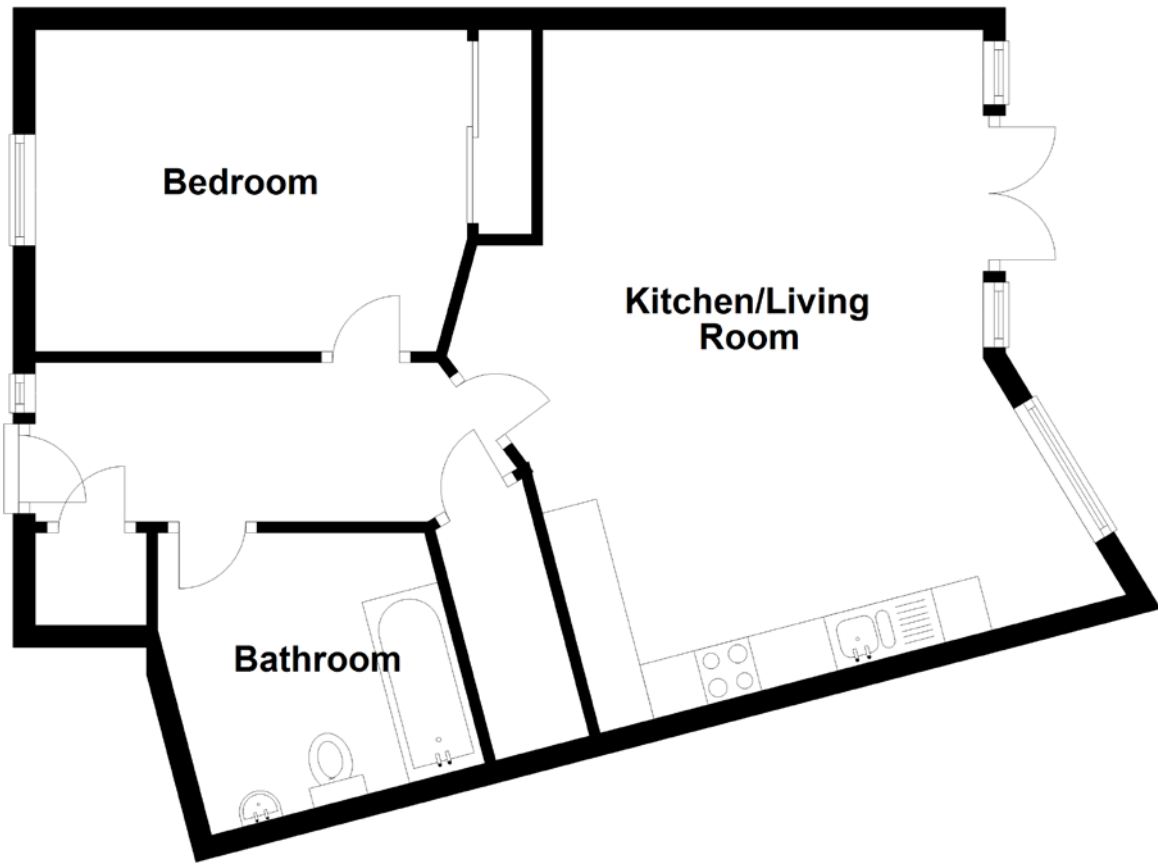


# FLOOR PLAN, DIMENSIONS & MAP



Approximate Dimensions (Taken from the widest point)

Bedroom 3.88m (12'9") x 2.89m (9'6")  
Bathroom 2.38m (7'10") x 2.28m (7'6")

Kitchen/Living Room

7.08m (23'3") x 4.99m (16'4")

Gross internal floor area (m<sup>2</sup>): 60m<sup>2</sup>  
EPC Rating: B

