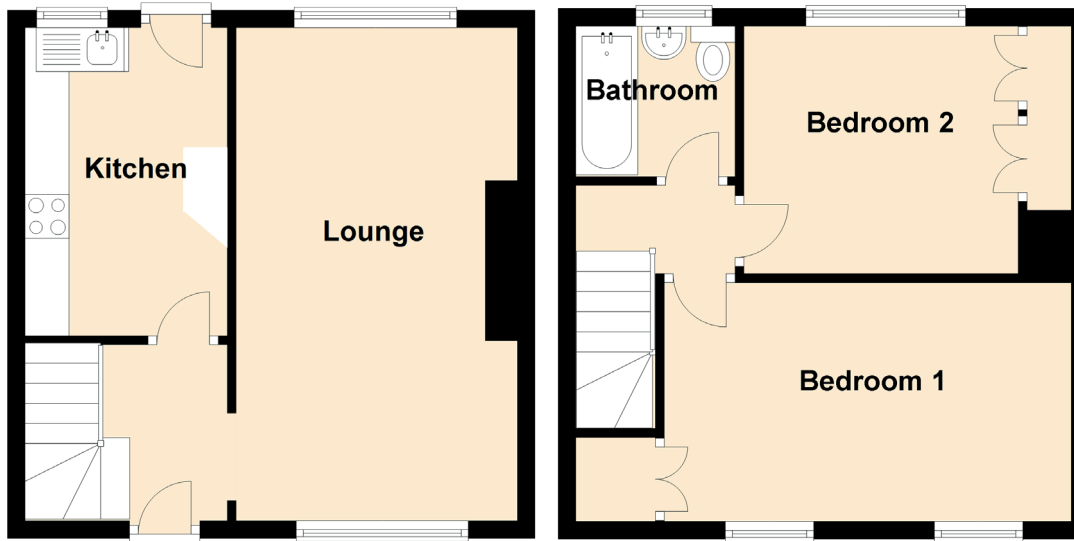


8 Ochilview Terrace

BO'NESS, EH51 0LB



Approximate Dimensions (Taken from the widest point)

Lounge	5.60m (18'4") x 3.20m (10'6")
Kitchen	3.50m (11'6") x 2.30m (7'7")
Bathroom	1.80m (5'11") x 1.70m (5'7")
Bedroom 1	4.60m (15'1") x 2.70m (8'10")
Bedroom 2	3.10m (10'2") x 2.80m (9'2")