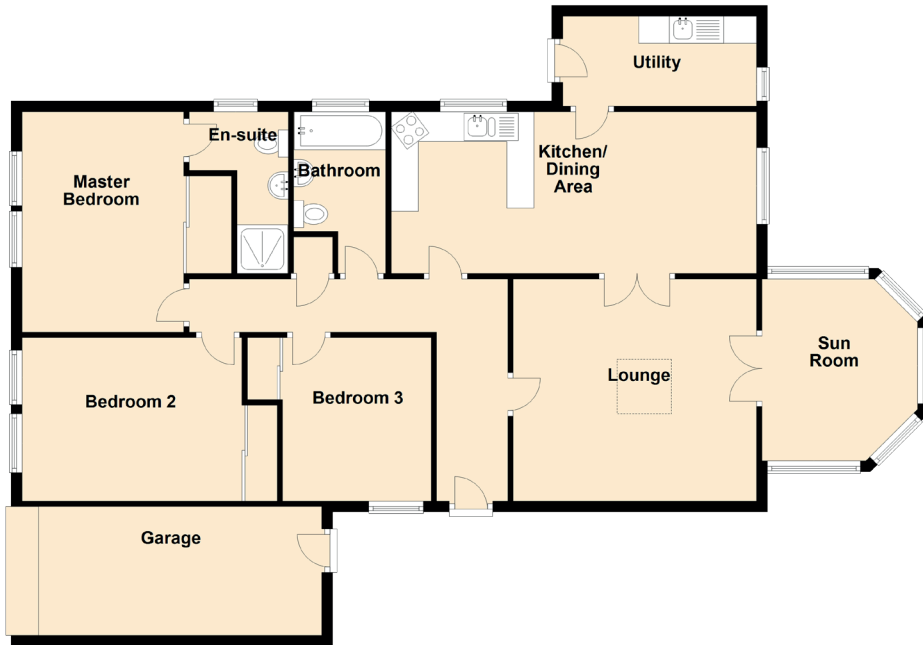


# 5 Morven View

TARLAND, ABOYNE, AB34 4UH



Approximate Dimensions (Taken from the widest point)

Lounge	4.47m (14'8") x 4.10m (13'5")
Kitchen/ Dining Area	6.71m (22') x 3.03m (9'11")
Utility	3.56m (11'8") x 1.66m (5'5")
Sun Room	3.35m (11') x 2.86m (9'5")
Master Bedroom	4.06m (13'4") x 2.97m (9'9")
En-suite	2.98m (9'9") x 0.94m (3'1")
Bedroom 2	4.04m (13'3") x 3.01m (9'11")
Bedroom 3	3.01m (9'11") x 2.73m (8'11")
Bathroom	2.95m (9'8") x 1.69m (5'7")