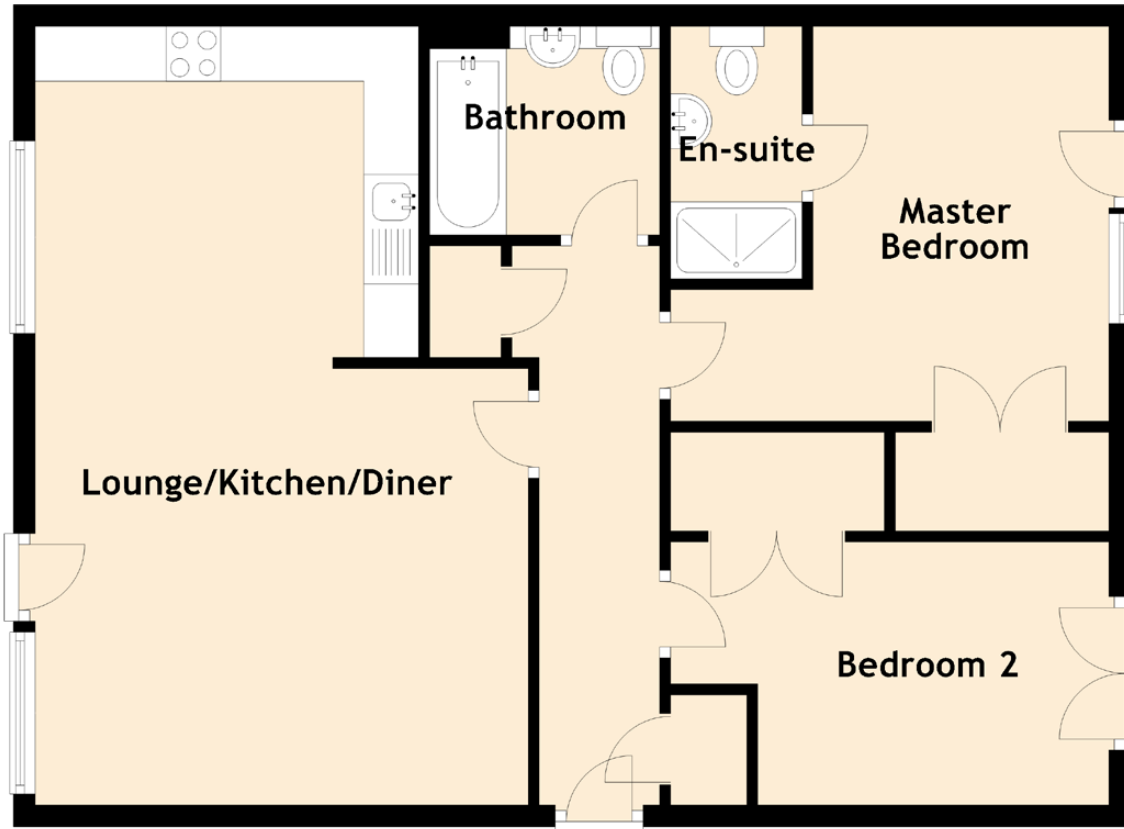


# 0/1 9 Dalsholm Place

DALSHOLM PARK, MARYHILL, GLASGOW, G20 0UH



Approximate Dimensions  
(Taken from the widest point)

Lounge/Kitchen/Diner	7.10m (23'4") x 4.50m (14'9")
Master Bedroom	4.00m (13'1") x 3.60m (11'10")
En-suite	2.30m (7'7") x 1.20m (3'11")
Bedroom 2	4.00m (13'1") x 2.40m (7'10")
Bathroom	2.10m (6'11") x 1.90m (6'3")

Gross internal floor area (m<sup>2</sup>): 68m<sup>2</sup>

EPC Rating: C