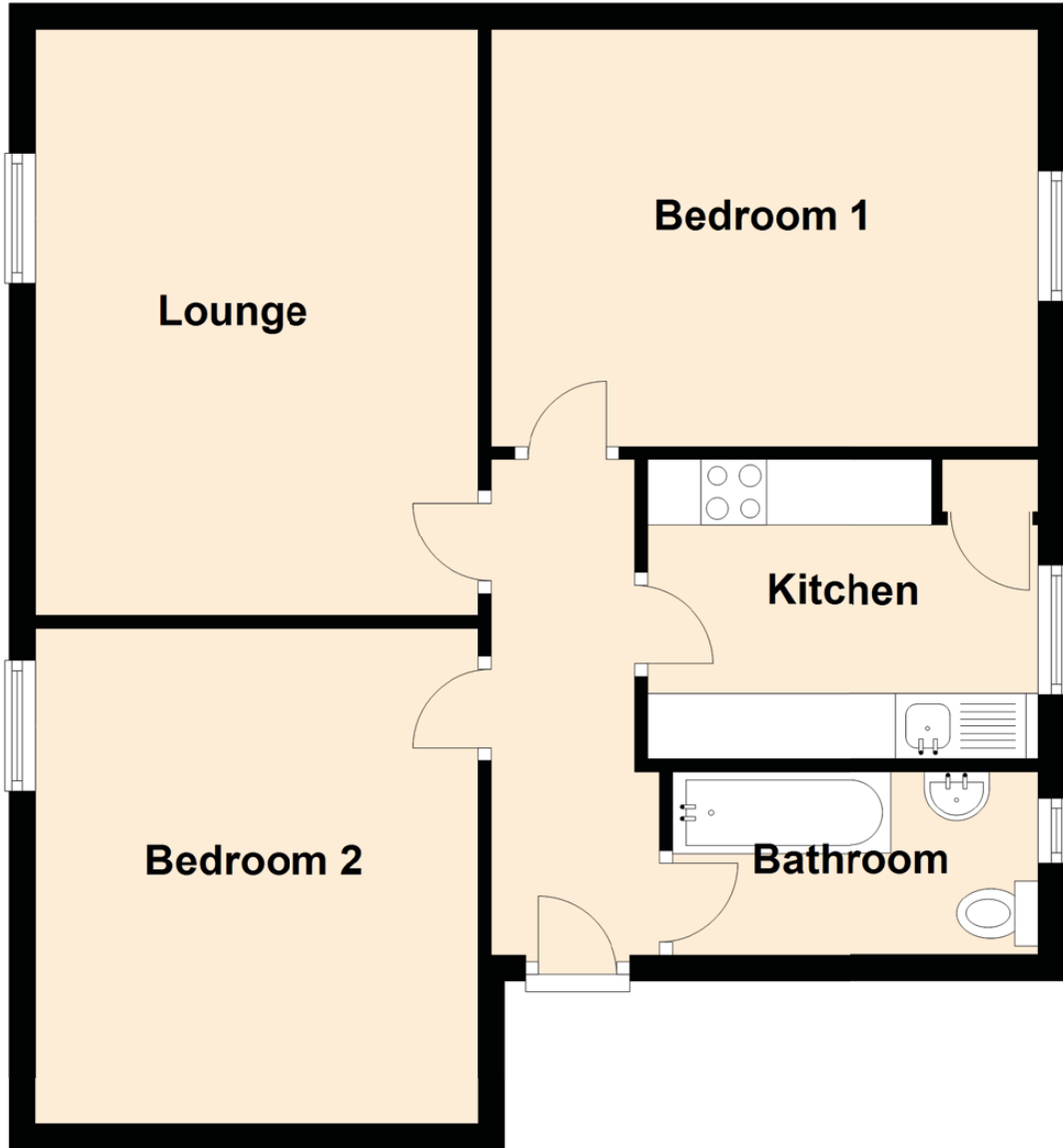


# 10D Moncur Crescent

DUNDEE, ANGUS, DD3 8AD



Approximate Dimensions (Taken from the widest point)

Lounge	4.50m (14'9") x 3.40m (11'2")
Kitchen	3.00m (9'10") x 2.30m (7'7")
Bedroom 1	4.20m (13'9") x 3.20m (10'6")
Bedroom 2	3.80m (12'6") x 3.40m (11'2")
Bathroom	2.90m (9'6") x 1.40m (4'7")

Gross internal floor area (m<sup>2</sup>): 61m<sup>2</sup>