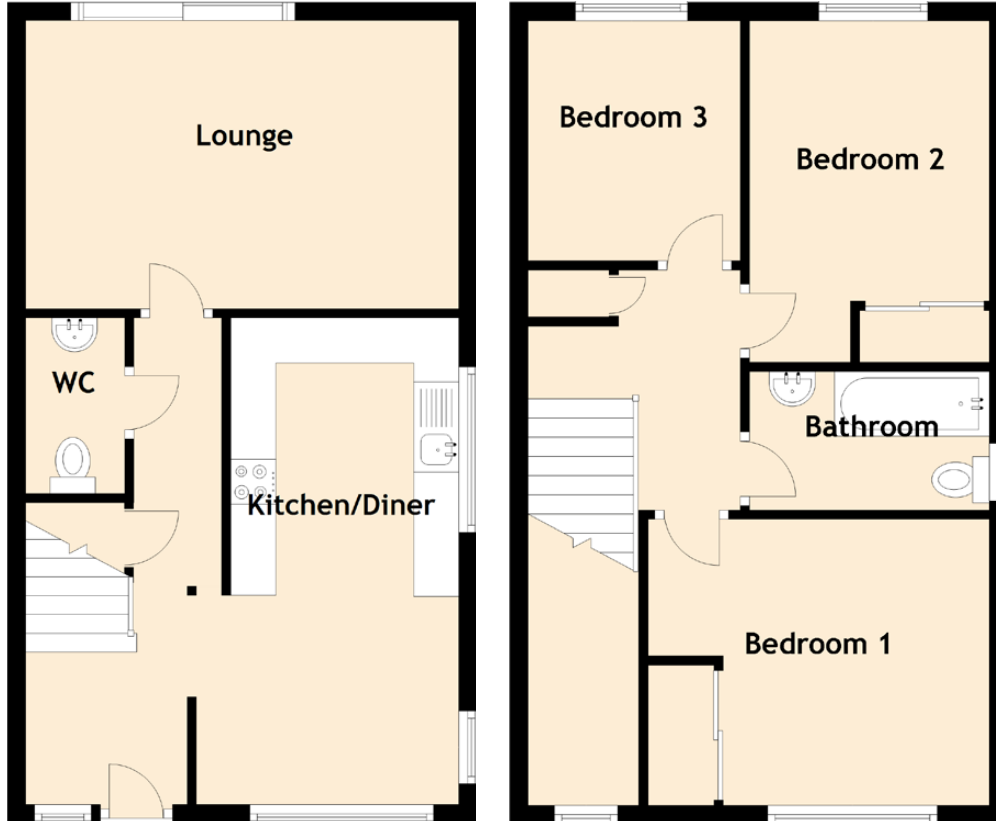


42 Kintyre Avenue

DOONFOOT, AYR, SOUTH AYRSHIRE, KA7 4GB



Approximate Dimensions
(Taken from the widest point)

Kitchen/Diner	5.40m (17'9") x 2.90m (9'6")
Lounge	4.80m (15'9") x 3.20m (10'6")
WC	1.95m (6'5") x 1.10m (3'7")
Bedroom 1	3.70m (12'2") x 3.10m (10'2")
Bedroom 2	3.70m (12'2") x 2.60m (8'6")
Bedroom 3	2.60m (8'6") x 2.20m (7'3")
Bathroom	2.60m (8'6") x 1.50m (4'11")