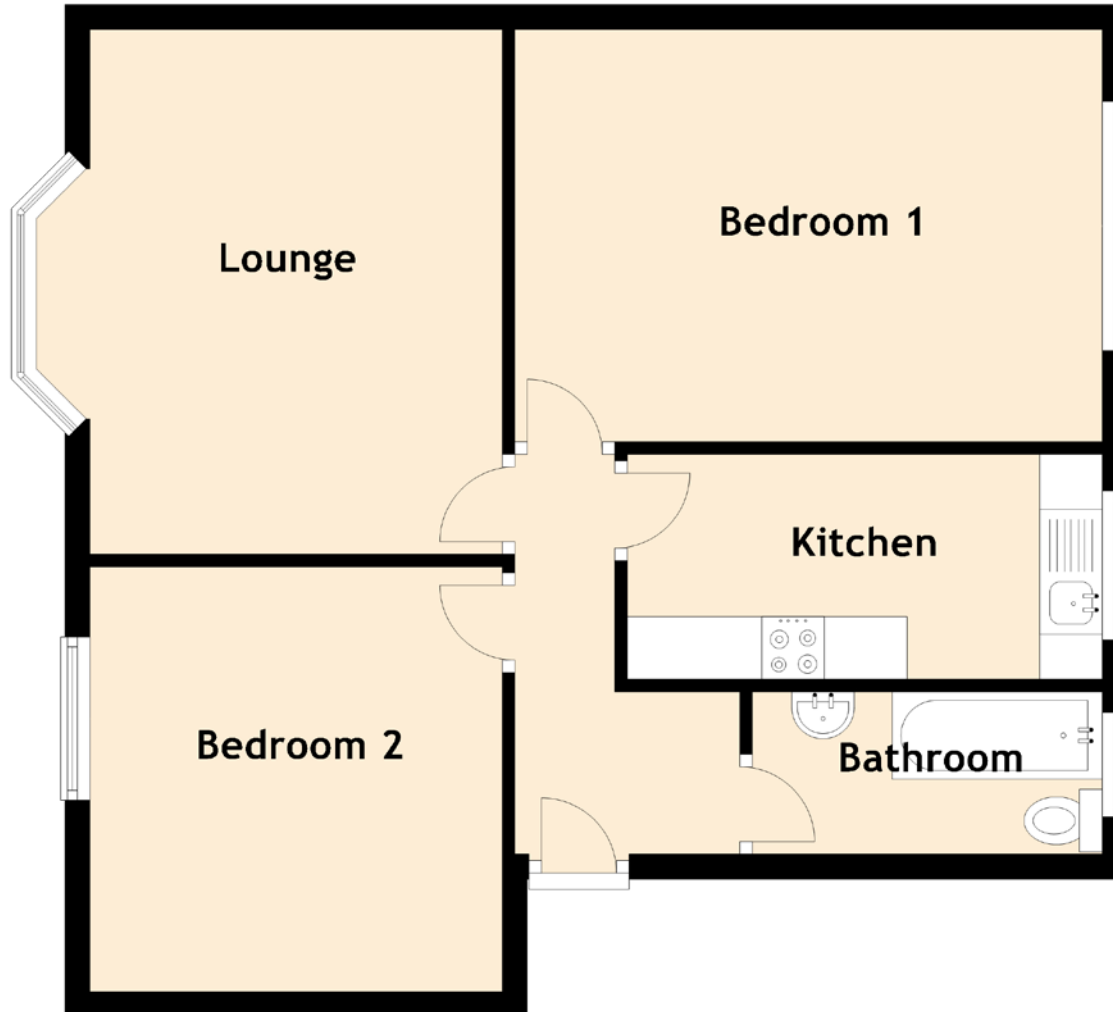


1/2, 303 Shieldhall Road



Approximate Dimensions
(Taken from the widest point)

Lounge	4.20m (13'9") x 3.30m (10'10")
Kitchen	3.80m (12'6") x 1.80m (5'11")
Bedroom 1	4.70m (15'5") x 3.30m (10'10")
Bedroom 2	3.40m (11'2") x 3.30m (10'10")
Bathroom	2.80m (9'2") x 1.30m (4'3")

Gross internal floor area (m²): 67m²

EPC Rating: E